

4

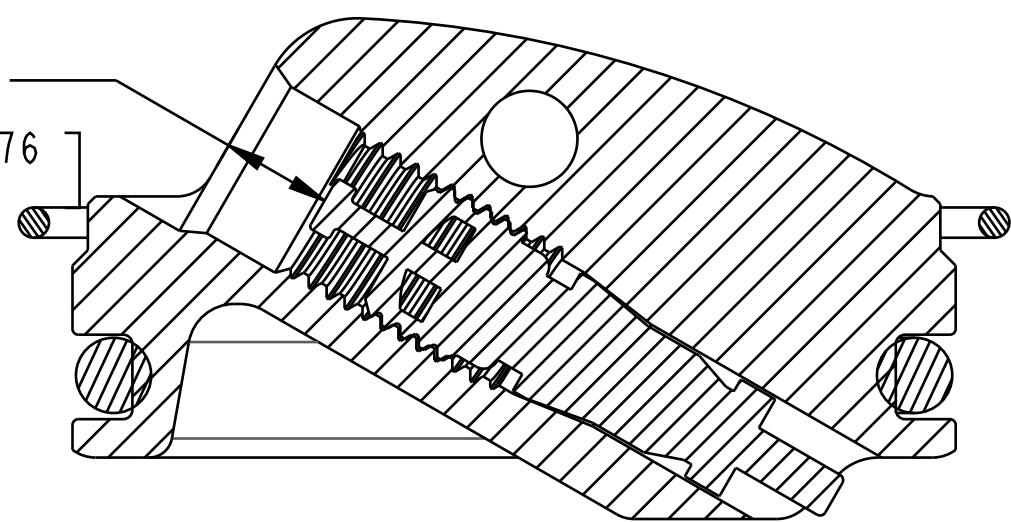
3

2

1

DEPTH OF VALVE CORE AFTER TORQUE

.144^{+.030}_{-.000}
[3,66^{+0,76}₀]



SECTION A-A
SCALE 4:1

TORQUE:
3±1 in-lb

GREASE:
THIN LAYER
SLICK HONEY

Air Cap: Rezi Fill, 2021 DH Shock

Seals: O-Ring [3.5MM ID x 1.0MM CS] Metric, N-70, Static

Air Valve Parts: Core, "Eaton", Blue, low pressure

Seals: O-Ring [24MM ID x 2.5MM CS] Metric, N-70, Dynamic

GREASE:
THIN LAYER
SLICK HONEY

Reservoir End Cap: Ø.160, Low Profile, 2021 DH Shock

Retaining Ring: Wire [1.290 OD X 0.040 CS] 17-7 SST

FOX **FOX Factory, Inc.** Ph 831-768-1100
130 Hangar Way, Watsonville, CA 95076 USA Fax 831-768-9312

TITLE
Reservoir End Cap Assy:
2021 DHX2 & FX2

SIZE DWG. NO. **C** 813-00-279-KIT

PLOT SCALE 3:1 SHEET 1 OF 1

- PROPRIETARY -
THIS DOCUMENT CONTAINS CONFIDENTIAL, PROPRIETARY INFORMATION
THAT IS FOX PROPERTY. DO NOT DISCLOSE TO OR DUPLICATE
FOR OTHERS EXCEPT AS AUTHORIZED BY FOX.

4

3

2

1

ProE ASSEM