

4

3

2

1

019-01-115
Fastener Standard (Metric): Screw, Socket Head, M2.5 X 8

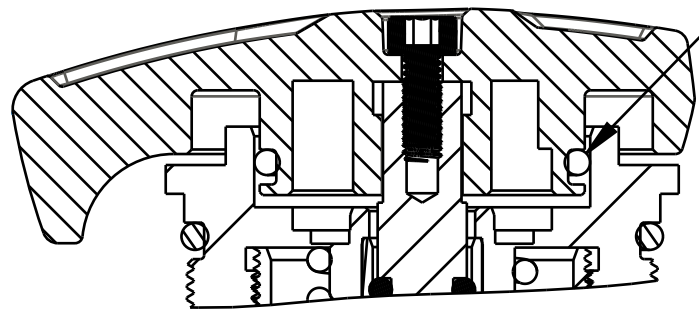
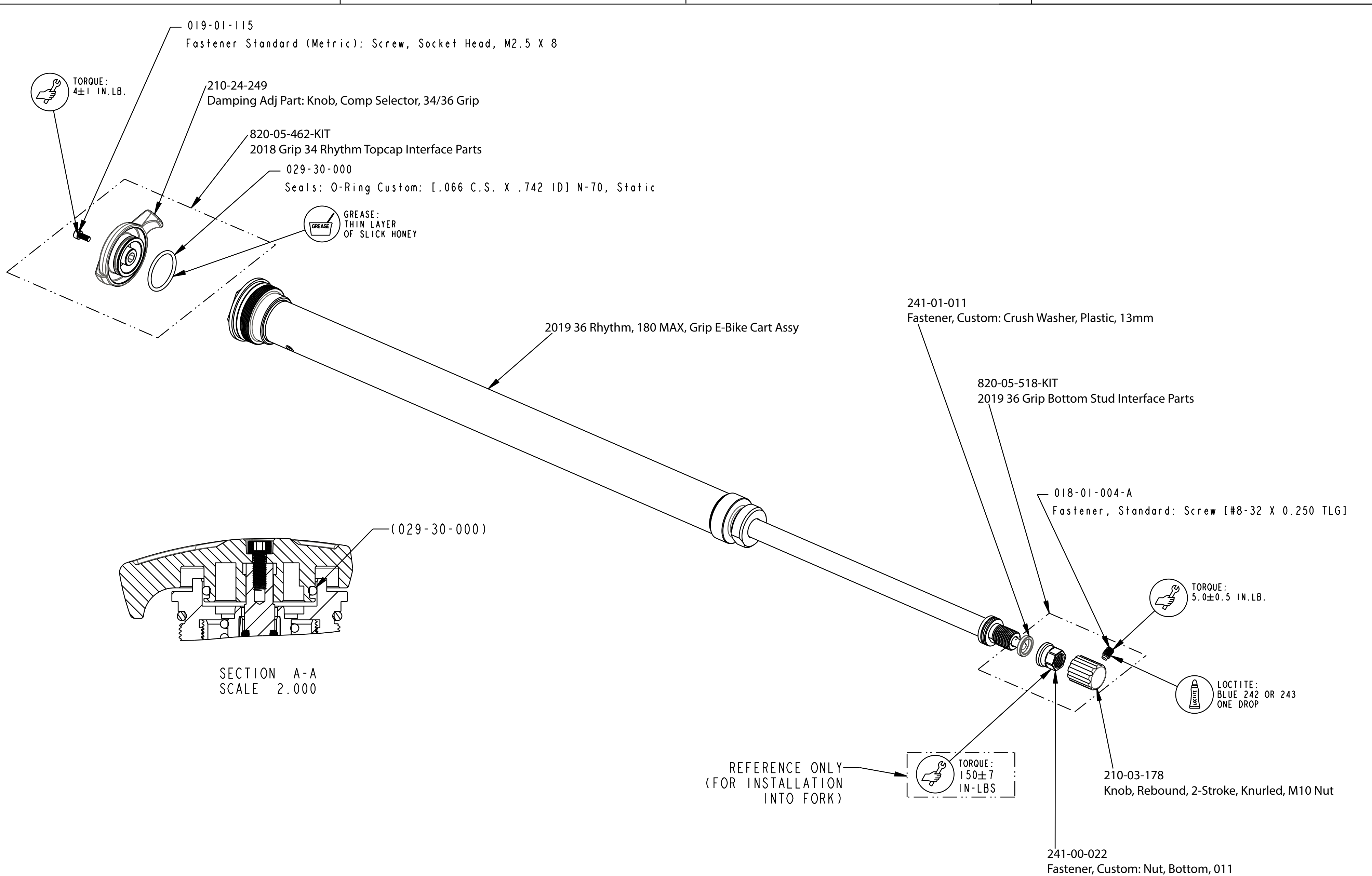
TORQUE:
4±1 IN.LB.

210-24-249
Damping Adj Part: Knob, Comp Selector, 34/36 Grip

820-05-462-KIT
2018 Grip 34 Rhythm Topcap Interface Parts

029-30-000
Seals: O-Ring Custom: [1.066 C.S. X .742 ID] N-70, Static

GREASE:
THIN LAYER
OF SLICK HONEY



SECTION A-A
SCALE 2.000

(029-30-000)

2019 36 Rhythm, 180 MAX, Grip E-Bike Cart Assy

241-01-011
Fastener, Custom: Crush Washer, Plastic, 13mm

820-05-518-KIT
2019 36 Grip Bottom Stud Interface Parts

018-01-004-A
Fastener, Standard: Screw [#8-32 X 0.250 TLG]

TORQUE:
5.0±0.5 IN.LB.

LOCTITE:
BLUE 242 OR 243
ONE DROP

210-03-178
Knob, Rebound, 2-Stroke, Knurled, M10 Nut

241-00-022
Fastener, Custom: Nut, Bottom, 011

REFERENCE ONLY
(FOR INSTALLATION
INTO FORK)

TORQUE:
150±7
IN-LBS

FOX FOX Factory, Inc. Ph 831-768-1100
 130 Hangar Way, Wilsonville, CA 95076 USA Fax 831-768-9312

TITLE **2019 36 Rhythm, 180 MAX,
Grip E-Bike Cart Assy Complete**

SIZE DWG. NO. **C 820-18-139-KIT**

PLOT SCALE 0.75:1 SHEET 1 OF 2

- PROPRIETARY -
THIS DOCUMENT CONTAINS CONFIDENTIAL, PROPRIETARY INFORMATION
THAT IS FOX PROPERTY. DO NOT DISCLOSE TO OR DUPLICATE
FOR OTHERS EXCEPT AS AUTHORIZED BY FOX.

4

3

2

1

ProE ASSEM