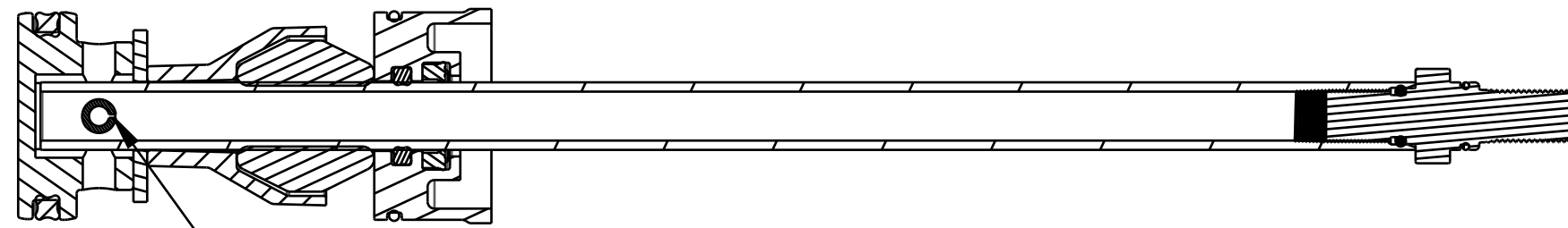


4

3

2

1



IMPORTANT:
ORIENT GAP IN PIN TOWARDS
TOPOUT SPACER $\pm 15^\circ$

Seals: O-Ring [8.0MM ID x 1.0MM CS] Metric, N-70, Static

Base Stud: Float, 0.305-48 Thread

Seals: O-Ring [6.0mm ID x 1.5mm CS] Metric, N-70, Static

234-04-629
Topout Bumper, FLOAT NA

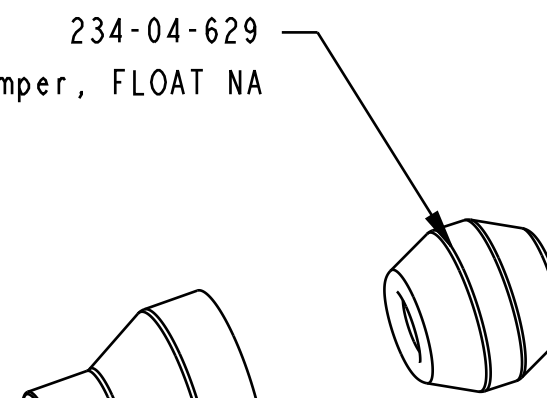
029-08-060

029-08-022

234-04-738
Topout Spacer, FLOAT NA 2, 0.040" Thick, Aluminum

035-00-213
Seals: Q-Ring [(-213) .139 C.S. X 0.921 ID]

222-01-333
Piston, FLOAT NA 2 LC, 34, 1.214 Bore



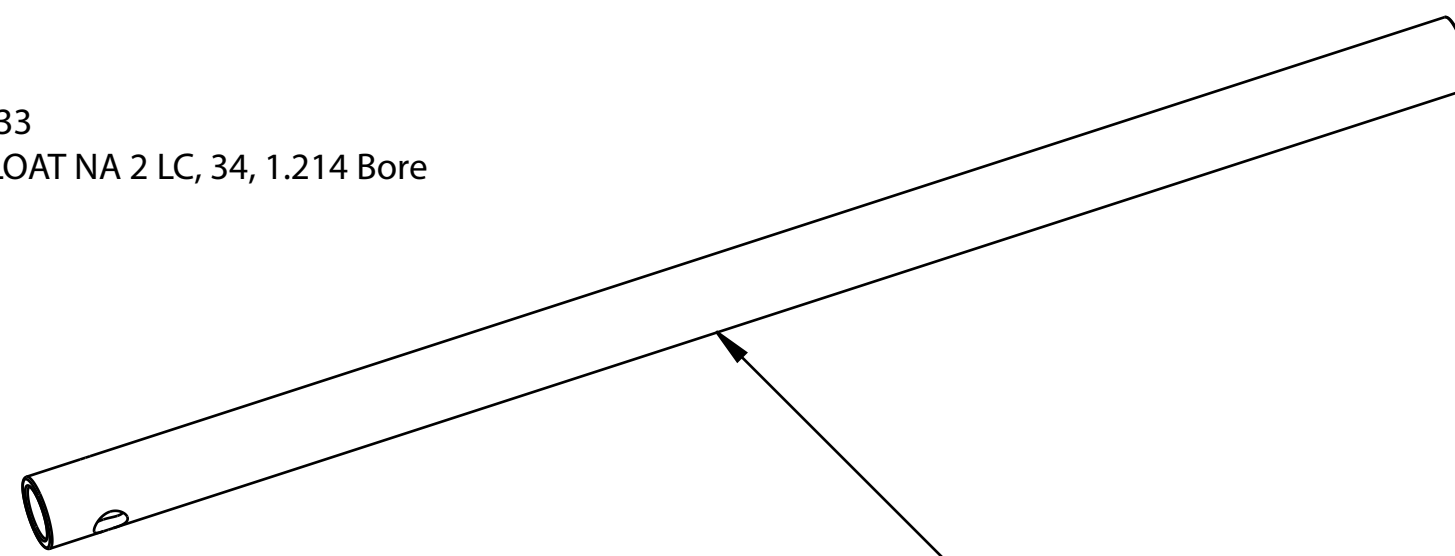
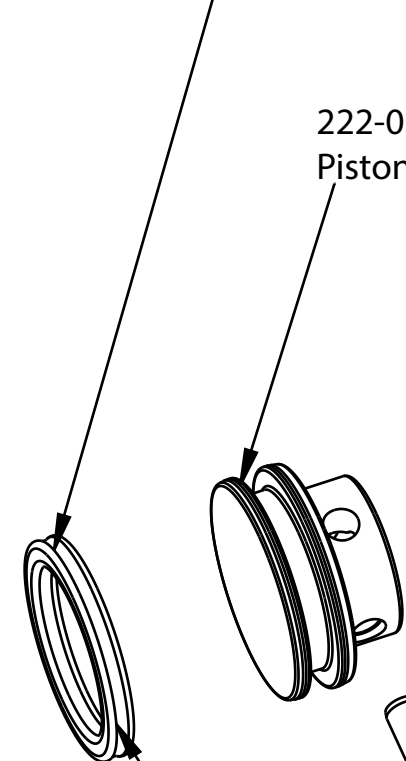
TORQUE:
50 \pm 5 IN LB

GREASE:
THIN LAYER
OF SLICK HONEY

LOCTITE:
1-2 DROPS
RED 262

820-02-523-KIT
Neg Plate Subassembly, 2019 FLOAT LC NA 2,
34, All Travels, 1.214 Bore, Aluminum

234-04-739
Topout Spacer, Float, Rhythm



AIR SHAFT

IMPORTANT:
PRESS PIN UNTIL CENTERED

060-01-010
Pin: Spring [Ø 0.188 X 0.875 TLG] Spring Steel, Zinc

IMPORTANT:
VERIFY SEAL IS NOT
TWISTED AFTER INSTALL

		FOX Factory, Inc.	Ph 831-768-1100
		130 Hangar Way, Watsonville, CA 95076 USA	Fax 831-768-9312
2019 36 E-Bike+			
FLOAT NA2 Air Shaft Assemblies			
TITLE			
SIZE	DWG. NO.		
C			
PLOT SCALE	1:1:1	SHEET 1 OF 1	

PROPRIETARY
THIS DOCUMENT CONTAINS CONFIDENTIAL, PROPRIETARY INFORMATION
THAT IS FOX PROPERTY. DO NOT DISCLOSE TO OR DUPLICATE
FOR OTHERS EXCEPT AS AUTHORIZED BY FOX.

4

3

2

ProE ASSEM