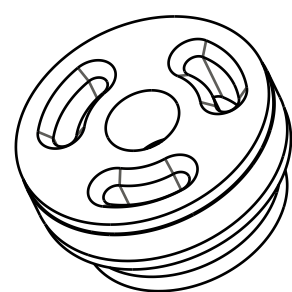


4

3

2

1



Bearing: External, Turcon [.136W x .8690D x .031THK]
 002-02-077

Seals: O-Ring [17.0MM ID x 1.0MM CS] Metric, N-70, Static
 029-08-040

Piston: Damping, .868in Bore, .250in Post, X2

Valve: [.700 OD X .252 ID X .0045 TH]
 044-04-070

Valve: Ring Shim [.700 OD X 0.610 ID X .008 TH]
 043-15-073

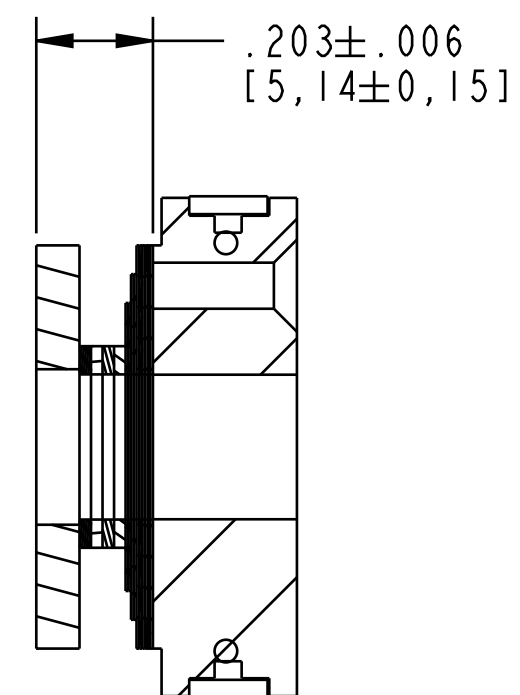
Valve: [.600 OD X .252 ID X .0045 TH]
 044-04-060

Valve: [.500 OD X .252 ID X .0045 TH]
 044-04-050

Valve: [.350 OD X .252 ID X .020 TH]
 044-20-035

IMPORTANT:
 Piston Orientation

Spacer: Topout Plate [.250 ID X .783 OD X .070 THK] Steel
 233-00-286



SECTION A-A
 SCALE 3:1

		FOX Factory, Inc.	Ph 831-768-1100
		130 Hangar Way, Watsonville, CA 95076 USA	Fax 831-768-9312
TITLE		Piston Assembly: X2, .868in Bore, CM	
SIZE	DWG. NO.	805-00-108-KIT	
C			
PLOT SCALE .60:1		SHEET OF 1	

- PROPRIETARY -
 THIS DOCUMENT CONTAINS CONFIDENTIAL, PROPRIETARY INFORMATION
 THAT IS FOX PROPERTY. DO NOT DISCLOSE TO OR DUPLICATE
 FOR OTHERS EXCEPT AS AUTHORIZED BY FOX.

4

3

2

ProE ASSEM