



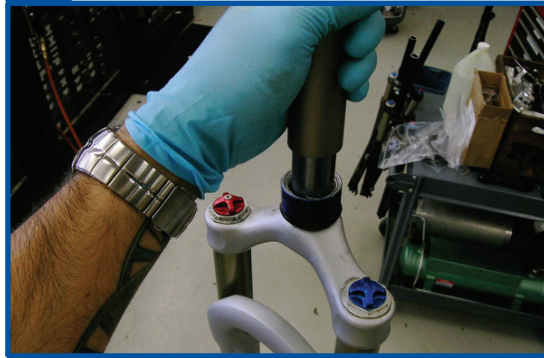
32MM Fork Installation (New)

Tools required: Safety glasses, star-fangled nut installation tool, star-fangled nut (included with fork accessory kit), crown race setter, cutting guide and hacksaw (or pipe cutter)

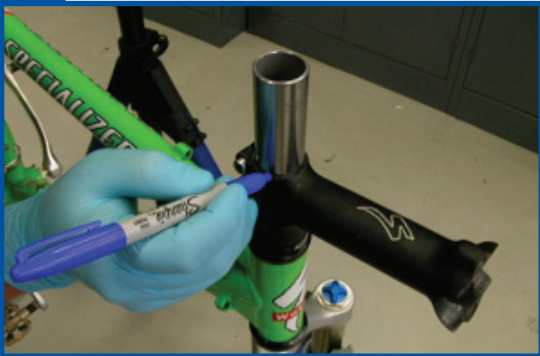
- 01** Install your threadless headset according to the headset manufacturer's instructions. Shown is a typical threadless headset.



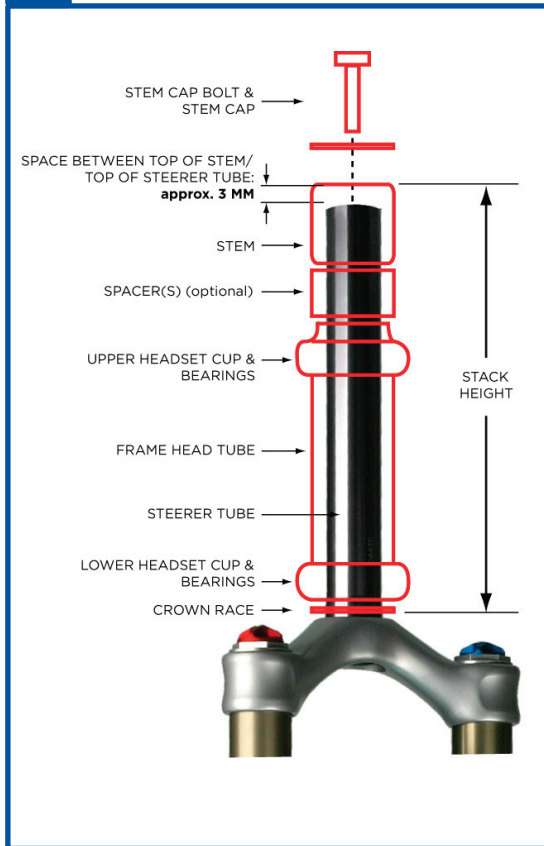
- 02** Install the crown race on your FOX fork using a crown race installer tool.



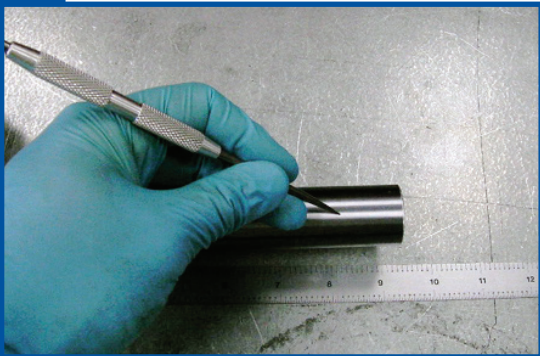
- 03** Insert the fork into your bicycle's headtube. Be sure the upper and lower headset parts, spacers and stem are in their proper positions. Mark a line on the steerer flush with the top of the stem.



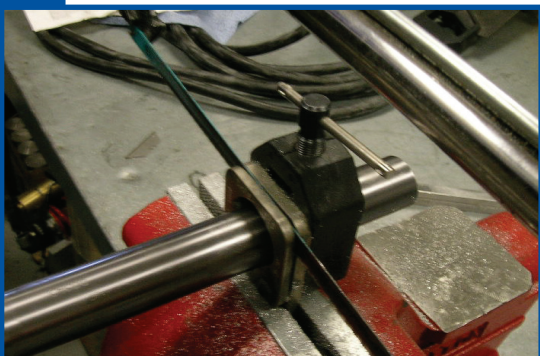
- 04** The diagram below shows a steerer tube that has been properly cut. Notice that the steerer is about 3 mm below the top of the stem. It is always a good idea to measure the steerer tube length with spacers on. You can always cut more off later.



- 05** Use a scribe to mark another line 3 mm below the line marked in step #3. **THIS IS YOUR CUT LINE.** Remember to measure twice, and cut once. If you are not sure, have your fork professionally installed.



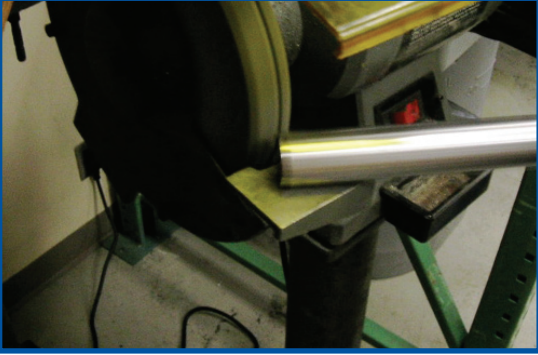
- 06** Align a cutting guide on the fork in line with the cut line marked in step #5, then secure the cutting guide in a vise. Using a hacksaw, cut the fork at the cut line.



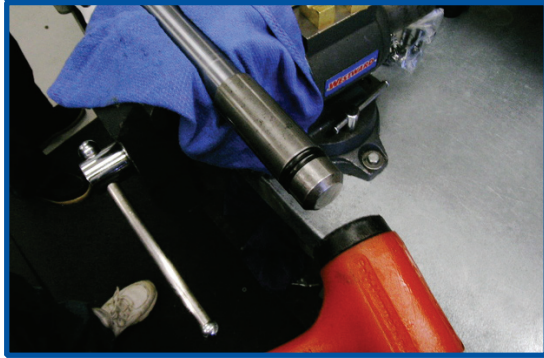
- 07** Instead of a cutting guide and hacksaw, a pipe cutter can be used to cut the steerer tube.



- 08** After cutting the steerer, deburr the edges of the newly cut steerer tube. Use proper procedures when grinding an aluminum steerer. Using the wrong wheel can result in serious injury! If you are not sure about the composition of your grinder wheel, use a round file or sandpaper instead.



- 09** Using a star-fangled nut installation tool, install the supplied star fangled nut.



- 10** Insert your fork into the headtube.



- 11** Place the requisite headset parts, spacers and stem onto the steerer tube and tighten bolts to manufacturer's specification. Place the stem cap and stem cap bolt on the stem and torque to manufacturer's specification.



- 12** Install your disc brakes in accordance with manufacturer's specifications. Or...



- 13** ...if you have V-brakes, install them in accordance with manufacturer's specifications.



- 14** For more detailed information on headset, crown race and star-fangled nut installation, go to www.parktool.com.

