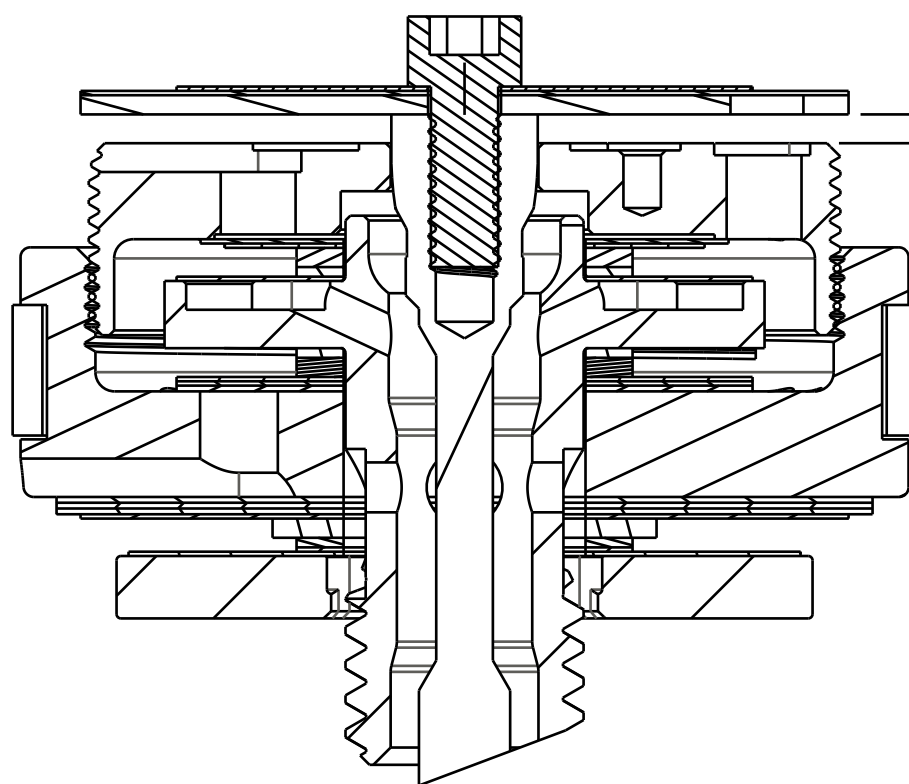


4

3

2

1



.030-.047
[0,77-1,19]
PLATE LIFT FROM CLOSED TO MIDDLE POSITION, ALL NON REMOTES

.072-.090
[1,83-2,29]
PLATE LIFT FROM CLOSED TO OPEN POSITION, ALL CABLE REMOTES

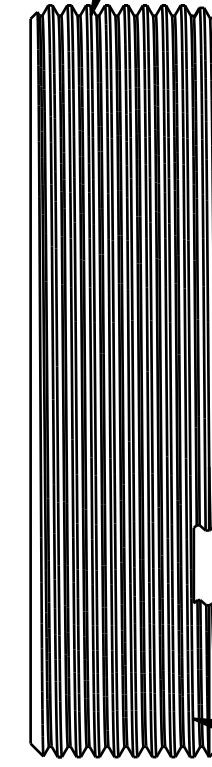
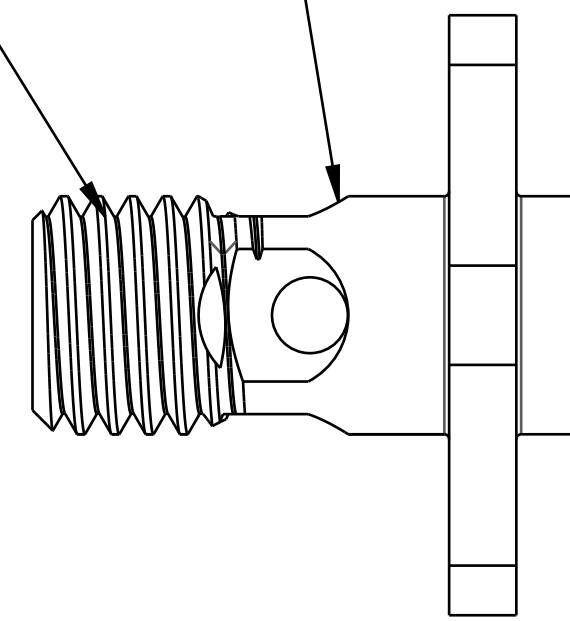
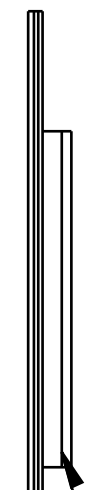
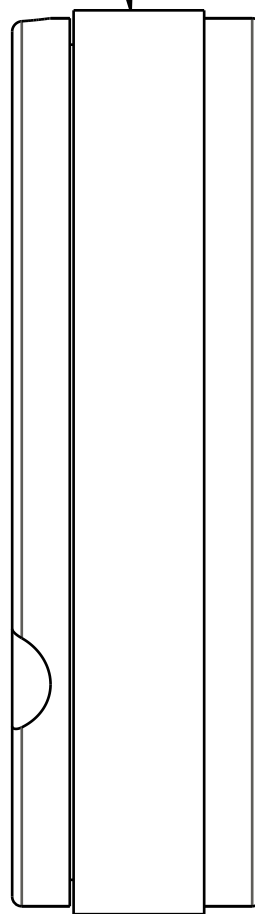
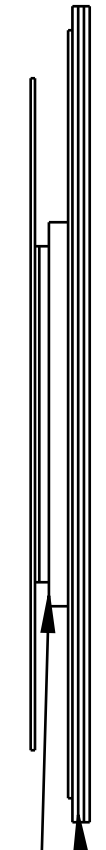
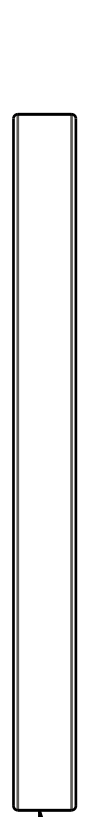
PISTON ASSEMBLIES:
805-02-304-KIT: Piston Assy: Damping, FLOAT DPS Anti-Clunk, Linear
805-02-305-KIT: Piston Assy: Damping, FLOAT DPS Anti-Clunk, Digressive

TORQUE:
60+/-5 IN-LB
CUSTOM SOCKET 398-00-637

Piston Bolt: Float DPS w/ Check 2mm Cross Holes [1/4-28 X 5/8 Hex]

100.60 LOCKOUT PISTON

TORQUE:
22+/-2 IN-LB
CUSTOM SOCKET 398-00-638



COMPRESSION VALVE STACK
SHOCK SHOULD HAVE 12-15 REBOUND CLICKS
SPACERS MAY BE ADDED OR REMOVED TO ADJUST NUMBER OF REBOUND CLICKS.

REBOUND VALVE STACK
SHOCK SHOULD HAVE 12-15 REBOUND CLICKS
SPACERS MAY BE ADDED OR REMOVED TO ADJUST NUMBER OF REBOUND CLICKS.

LOCKOUT VALVE STACK
SPACERS MAY BE ADDED OR REMOVED TO ADJUST LOCKOUT PLATE LIFT.

FLOAT MY2013 Check Piston [.700 OD X .252 ID X .065 TH] Round CNC, SS

FOX Factory, Inc.
130 Hangar Way, Watsonville, CA 95076 USA
Ph 831-768-1100
Fax 831-768-9312

TITLE
2021 FLOAT DPS VALVING ASSEMBLIES

SIZE DWG. NO.
C
PLOT SCALE 2.00:1 | SHEET 1 OF 1

PROPRIETARY
THIS DOCUMENT CONTAINS CONFIDENTIAL, PROPRIETARY INFORMATION
THAT IS FOX PROPERTY. DO NOT DISCLOSE TO OR DUPLICATE
FOR OTHERS EXCEPT AS AUTHORIZED BY FOX.

4

3

2

1

ProE ASSEM