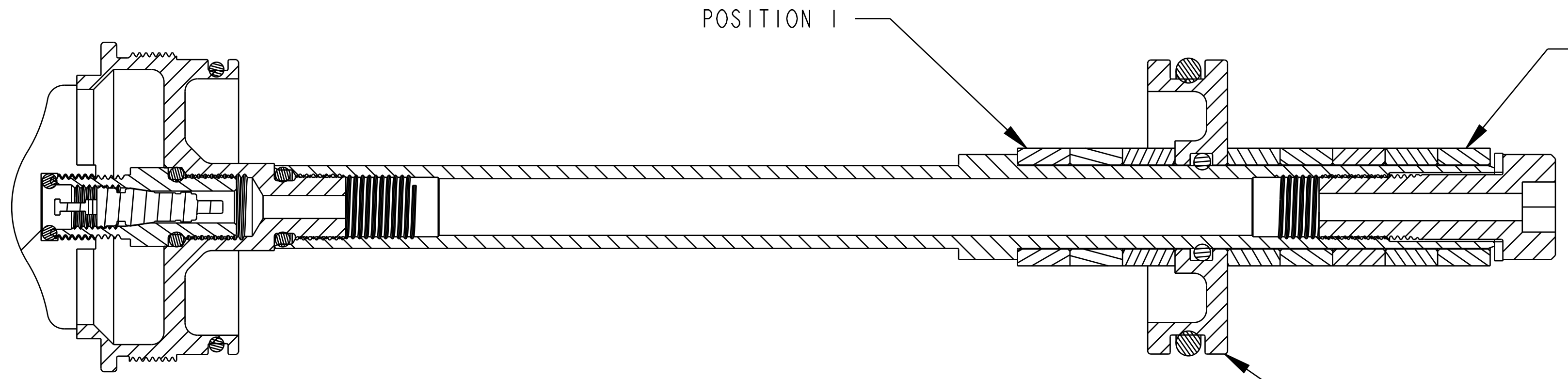


8
7
6
5
4
3
2
1

— PROPRIETARY —
THIS DOCUMENT CONTAINS CONFIDENTIAL, PROPRIETARY INFORMATION
THAT IS FOX PROPERTY. DO NOT DISCLOSE TO OR DUPLICATE
FOR OTHERS EXCEPT AS AUTHORIZED BY FOX.



! IMPORTANT:
NOTE PISTON
ORIENTATION

! IMPORTANT:
SEAL SURFACE
DO NOT DAMAGE

GREASE:
THIN LAYER
OF SLICK HONEY

LOCTITE:
1 DROP OF RED 262
TO INTERNAL THREAD

GREASE:
THIN LAYER
OF SLICK HONEY

TORQUE:
40±5 IN. LB.

TORQUE:
45±5 IN. LB.

029-08-135
Seals: O-Ring [30.0 MM ID x 3.0 MM CS] Metric, N-70, Static

(233-00-181)

GREASE:
THIN LAYER
OF SLICK HONEY

233-00-181
Spacer: ACR, 2013 40 FLOAT

029-08-136
Seals: O-Ring [9.0 MM ID x 2.0 MM CS] Metric, N-70, Static

206-05-023
Top Cap: Compression Bulkhead, 2013 40 FLOAT

019-01-097
Washer [M5, 5.3mm ID X 10mm OD X 1mm Thk], Zinc Plated

241-02-078
Fastener: Standard, Socket Head Cap, .313-32 UNEF X .875 LNG, Aluminum

029-03-026
O-Ring (-026) [.070 C.S. X 1.239 ID]

029-03-008
O-Ring (-008) [.070 C.S. X .176 ID]

029-03-010-A
O-Ring (-010) [.070 C.S. X .239 ID]

234-04-551
Air Topcap, FLOAT, 40, Blue Ano

010-00-012
Air Valve Parts: Tank Valve [5/16-32] w/O-ring Boss

Top Cap: 2013 40 FLOAT

234-04-403
2014 Float 40 Topcap Shaft

TORQUE:
30±2 IN. LB.

FOX Factory, Inc. 130 Hangar Way, Watsonville, CA 95076 USA, Ph 831-768-1100, Fax 831-768-9312			
2014 FLOAT 40 UPDATED TOPCAP ASSEMBLY			
SIZE D	PART NO. 820-05-284-KIT		
PLOT SCALE	1.50:1	ITERATION REV	1.3 SHEET 1 OF 1