

029-00-009
AIR VALVE O-RING

019-02-021
Set Screw: Custom Dog Point, Radius [M3 x .5mm, .300 TLG], SS

200-00-016
AIR VALVE

TORQUE:
35±5 IN LB

TORQUE:
TO CAM SHAFT
AND BACK OFF 1/4 TURN

EYELET

010-00-057
Air Valve Parts: Cap, Air Valve [.305-.32], Black, 6061

010-00-057

Spring: [0.190 TLG X 0.120 OD X 25.6 lbs/in] 17-7 SS, left hand wound

039-00-264

029-08-079
Seals: O-Ring [7.5MM ID x 1.5MM CS] Metric, N-70, Static

GREASE:
THIN LAYER
HIGH TEMP BLUE

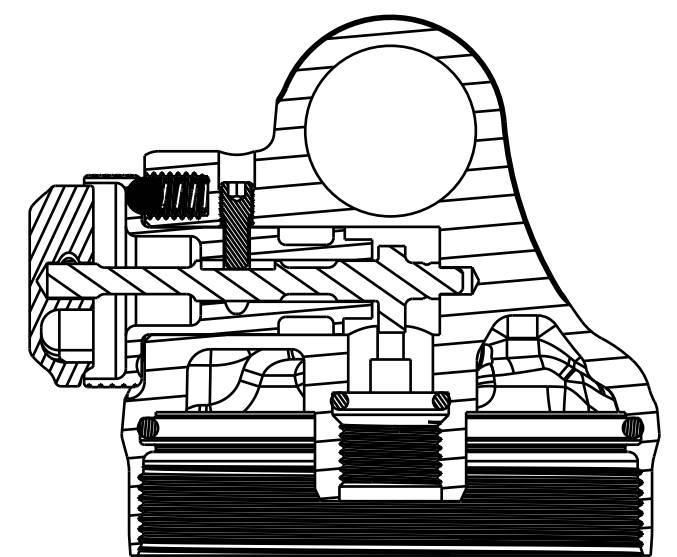
029-00-030
EYELET O-RING

010-01-000
Ball [Ø 0.1250] Steel

TORQUE:
5±1 IN LB

210-30-056
Cam: CD Adj, 2016 Float DPS, 3pos

GREASE:
THIN LAYER
HIGH TEMP BLUE



SECTION A-A

019-01-018
Socket Set Dog Point [M3 x .5mm x 6mm]

210-15-080
Damp Adj Part: Lever, CD Adj, 2016 Float DPS, 3pos, No Etch

210-30-044
Damp Adj Part: Knob, RD Adj, 2013 FLOAT CTD Perf And Evol

NOTES:

- 1 APPLY A THIN LAYER OF SLICK HONEY TO INSTALL ON AIR VALVE. APPLY A THIN LAYER OF FLOAT FLUID ON INSTALLED AIR VALVE O-RING PRIOR TO AIR VALVE INSTALLATION.

PROPRIETARY - THIS DOCUMENT CONTAINS CONFIDENTIAL, PROPRIETARY INFORMATION THAT IS FOX PROPERTY. DO NOT DISCLOSE TO OR DUPLICATE FOR OTHERS EXCEPT AS AUTHORIZED BY FOX.

FOX FOX Factory, Inc.		Ph 831-768-1100
130 Hangar Way, Watsonville, CA 95076 USA		Fax 831-768-9312
TITLE Eyelet 2017, FLOAT DPS, 3pos SV TRUNNION		
SIZE C	DWG. NO. 808-17-306-KIT	
PLOT SCALE .50:1		SHEET 1 OF 2