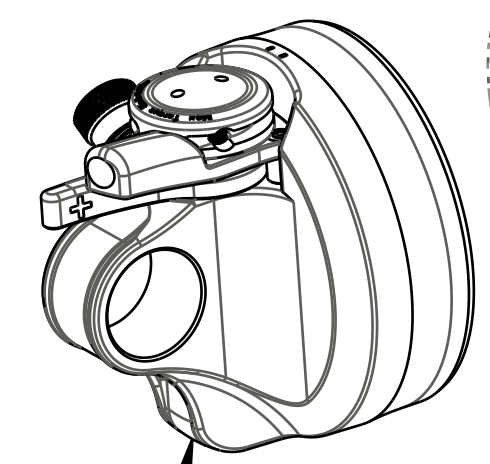


DETAIL A
SCALE 8:000

IMPORTANT:
LIP ORIENTATION
TOWARDS AIR SLEEVE

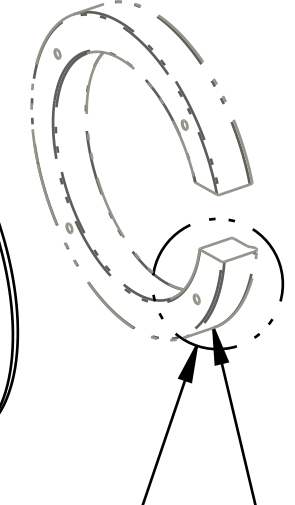
043-15-070
Valve: [.850 OD X .356 ID X .015 TH]

Seals: O-ring [.050 C.S. x .154 ID] Special N0552-90, Dynamic



EYELET ASSEMBLY
808-17-163-KIT

SEE DETAIL A



METERING ROD
210-84-004

010-01-009
Ball [Dia 1.5MM]Steel

029-12-000
Seals: O-ring, Square cut [0.087 ID X 0.039 WALL X 0.036 TH], NA103-70, Dynamic

VOLUME SPACER
233-00-214

029-05-030
TORQUE: 85±5 IN.LB.



LOCTITE:
RED 277



GREASE:
THIN LAYER



SHAFT
229-72-004

TORQUE:
10-15 IN.LB.



010-01-000
Ball [Ø 0.1250] Steel

TORQUE:
60±5 IN.LB.



GREASE:
THIN LAYER



BEARING ASSEMBLY
812-06-060-KIT

018-01-034
Set Screw [#8-32 X 0.125 TLG] Flat Point, SS

029-08-122
Seals: O-Ring [8.5mm ID x 2.5mm CS]Metric, N-70, static

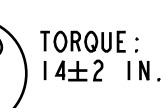
Air Valve Parts: Pellet [Ø 0.275 X 0.125 TLG] nitrile durometer A 90

010-00-011

010-00-010
Pellet Retainer [5/16-24, .220 TLG]

010-01-003
Ball [Ø 0.1875] Delrin

TORQUE:
14±2 IN.LB.



OIL:
2±.2cc
FLOAT FLUID



AIR SLEEVE ASSEMBLY
806-29-321-KIT

029-03-022
O-Ring (-022) [1.070 C.S. X .989 ID]



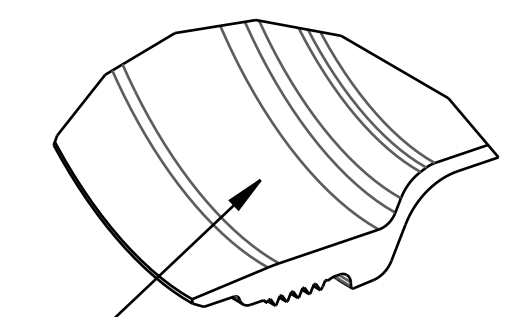
GREASE:
THIN LAYER
OF SLICK HONEY



TORQUE:
45±5 IN. LB.
HAND TIGHT



SEE DETAIL B



DETAIL B
SCALE 2:1

GREASE:
THIN LAYER
OF SLICK HONEY



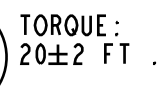
TORQUE:
3±.25 IN.LB.



GREASE:
THIN LAYER



TORQUE:
20±2 FT. LB.



805-00-092-KIT
Piston Assembly: Floating [Ø 0.940 Bore, 0.325 TLG]

018-01-015
Screw [#1-64 X .188 TLG]

078-04-060
Valve: (T) [.600 OD X .076 ID X .0045 TH]

078-04-080
Valve: (T) [.800 OD X .076 ID X .0045 TH]

241-01-061
Washer: L/O plate, Dish WRD [.800 O.D. X .076 I.D. X .020 TH]

COMPRESSION ROD
210-24-021

VALVE ASSEMBLY
807-06-182-KIT

BODY
204-54-211

IFP Depth: 2.360in +/- 0.020 IFP Pressure: 500psi

PROPRIETARY - THIS DOCUMENT CONTAINS CONFIDENTIAL, PROPRIETARY INFORMATION THAT IS FOR PROPERTY. DO NOT DISCLOSE TO OR DUPLICATE FOR OTHERS EXCEPT AS AUTHORIZED BY FOX.

FOX Factory, Inc.
130 Hangar Way, Watsonville, CA 95076 USA
Ph 831-768-1100 Fax 831-768-9312

TITLE
2017, Nude 3 DPS Evol, A, Scott, (e-)Genius 710 Plus, Genius 920, 7.500, 2.000, CL+, RM, CMF, YS-8099/YS-8099

SIZE DWG. NO. **972-91-159**

PLOT SCALE 1.00:1 SHEET 1 OF 2