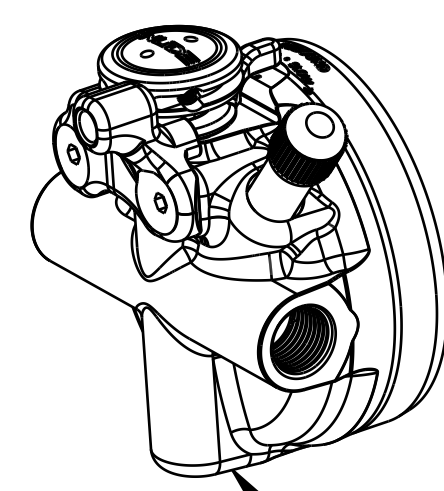


DETAIL A  
SCALE 8.000



808-17-246-KIT  
Eyelet Assy: 2018 FLOAT DPS, Nude 4, Trunnion, no Volume Spacer

233-00-213  
Volume Spacer: 2014 Nude 3, 0.1in<sup>3</sup>  
NOT USED FOR CONTESSA MODELS

210-84-012  
Damp Adj Part: (T) FLOAT 2017, Metering Rod Rebound [110 ID X 3.025 TLG], 55mm

010-01-009  
Ball [Dia 1.5MM] Steel

029-12-000  
Seals: O-ring, Square cut [0.087 ID X 0.039 WALL X 0.036 TH], NA103-70, Dynamic

229-72-012  
Shaft (T) [.175 ID x .354 OD x 2.922 TLG]  
AL 7075-T6, Black Ano III, 55mm

LOCTITE: RED 277

GREASE: THIN LAYER

GREASE: THIN LAYER

TORQUE: 85±5 IN. LB. FLUSH

TORQUE: 10-15 IN. LB.

018-01-034  
Set Screw [#8-32 X 0.125 TLG] Flat Point, SS

010-01-000  
Ball [Ø 0.1250] Steel

TORQUE: 60±5 IN. LB.

VALVING ASSEMBLIES:  
807-06-227-KIT: Valving Assy: 2018 Float DPS, R/C, LCL, LRM, CMF [.940 Bore]  
807-06-221-KIT: Valving Assy: 2018 Float DPS, R/C, LCM, LRM, CMF [.940 Bore]  
807-06-261-KIT: Valving Assy: 2018 Float DPS, N/R, LCM, LRM, CMF [.940 Bore]

010-00-010  
Pellet Retainer [5/16-24, .220 TLG]

TORQUE: 3±.25 IN. LB.

GREASE: THIN LAYER

TORQUE: 20±2 FT. LB.

GREASE: THIN LAYER

GREASE: THIN LAYER

010-00-011  
Air Valve Parts: Pellet [Ø 0.275 X 0.125 TLG] nitrile durometer A 90

010-01-003  
Ball [Ø 0.1875] Delrin

AIR SLEEVE ASSEMBLIES:  
806-29-325-KIT: Sleeve Assy: Evol, Ano, Nude 4, 185(T) X 50/55  
806-29-335-KIT: Sleeve Assy: Evol, Kashima, Nude 4, 185(T) X 50/55  
806-29-424-KIT: Sleeve Assembly: 2017 Float Evol LV [4.015 TLG] Kashima, 185(T)/210 X 55

TORQUE: 14±2 IN. LB.

029-03-022  
O-Ring (-022) [1.070 C.S. X .989 ID]

ADD 2±.2cc FLOAT FLUID

GREASE: THIN LAYER

GREASE: THIN LAYER OF SLICK HONEY

TORQUE: 45±5 IN. LB. HAND TIGHT

BODIES:  
204-54-232: Body: FLOAT [Ø 0.940 Bore, 1.060 OD, 4.352 TLG] Black Ano III, 185(T) x 50/55  
207-50-032: Body: FLOAT [Ø 0.940 Bore, 1.060 OD, 4.352 TLG] Kashima, 185(T) x 50/55

805-00-092-KIT  
Piston Assembly: Floating [Ø 0.940 Bore, 0.325 TLG]

018-01-015  
Screw [#1-64 X .188 TLG]

241-01-074  
Tri-lobe Lockout Plate: [.800 OD, .020 TH], 20L/20C Steel

210-24-026  
Damping Adjust Part: (T) Inner Comp Rod, Scott Float DPS, 2017, 3.671 TLG, 55mm Travel

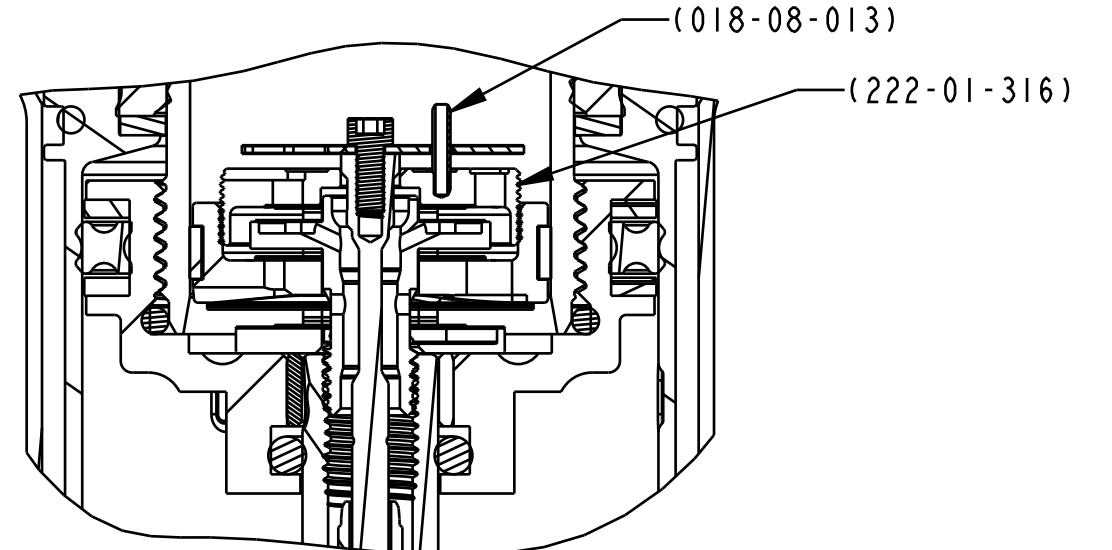
018-08-013  
Slotted Spring Pin, [IMM Diameter X 6mm Length], 18-8 SS

812-06-060-KIT  
Bearing Assy: FLOAT 2013, Black [.940 Bore, 1.500 Bore, 9mm Shaft, .815 TLG]

029-08-122  
Seals: O-Ring [8.5mm ID x 2.5mm CS] Metric, N-70, static

043-15-070  
Valve: [.850 OD X .356 ID x .015 TH]

029-05-030  
Seals: O-ring [.050 C.S. x .154 ID] Special N0552-90, Dynamic



SECTION B-B  
SCALE 2.000