

4

3

2

1

D

D

C

C

B

B

A

A

ASSEMBLE 002-02-011 AT THIS LEVEL

820-03-469-KIT  
2016 34 26in and 27.5in and 29in FIT4 Damper Shaft Assy

TORQUE:  
55±5 IN.LB.

038-01-073  
Retaining Ring: Wire [.280 OD X .024 CS] SS

210-22-920  
Compression Adjust Coupler, F-S, FIT4

029-08-068  
Seals: O-Ring [3.0MM ID x 1.5MM CS] Metric, N-70, Static

820-05-423-KIT  
2018 36 FIT4 F-S Topcap Assy, Spd Ped-Elec, E18, Black Ano

TORQUE:  
55±5 IN.LB.

207-11-108  
(T) Pressure Tube, 15.5 Bore, 180 Max Travel, FIT4

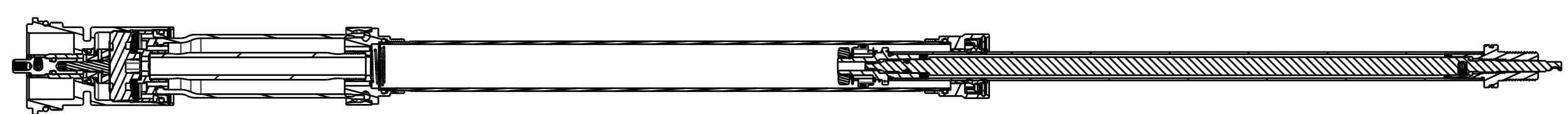
039-00-243  
Spring: Detent [.138 TLG X .087 OD X 48 lb/in] SS

010-01-012  
Air Valve Parts: Ball [Ø 0.1094] E52100 Grade 25 Steel, Chrome

GREASE:  
THIN LAYER  
OF SLICK HONEY ON BALL

ASSEMBLE THESE PARTS AFTER OIL FILL

COMPRESS DAMPER SHAFT 3IN BEFORE SEALING DAMPER



- PROPRIETARY -  
THIS DOCUMENT CONTAINS CONFIDENTIAL, PROPRIETARY INFORMATION  
THAT IS FOX PROPERTY. DO NOT DISCLOSE TO OR DUPLICATE  
FOR OTHERS EXCEPT AS AUTHORIZED BY FOX.

**FOX** **FOX Factory, Inc.** Ph 831-768-1100  
 130 Hangar Way, Watsonville, CA 95076 USA Fax 831-768-9312

TITLE  
**2018 36 27.5in and 29in 120-160 F-S FIT4**  
**Cart Assy, Spd Ped-Elec, E18, Black Ano**

SIZE DWG. NO.  
**C**

PLOT SCALE | .00:1 | SHEET | OF |