

REFERENCE ONLY
(FOR INSTALLATION
INTO FORK)

TORQUE:
50±5
IN-LBS

REBOUND KNOBS:
210-22-523: Knob: Rebound Adj, Extruded
210-24-006: Knob, Rebound Adjust, Extruded, 2016 32 29in 15x110QR

LOCTITE:
BLUE 242
ONE DROP

018-01-004-A
Fastener, Standard: Screw [#8-32 X 0.250 TLG]

TORQUE:
5.0±1.0 IN. LB.

241-00-005
Fastener, Custom: Nut, Bottom, R_RL_RLC

241-01-002-C
Fastener, Custom: Crush Washer, Plastic, R_RL_RLC

BOTTOM STUD INTERFACE PARTS:
820-05-334-KIT: 2016 FIT4 Bottom Stud Interface Parts 32
820-05-381-KIT: 2016 FIT4 Bottom Stud Interface Parts 32 29in 15x110QR

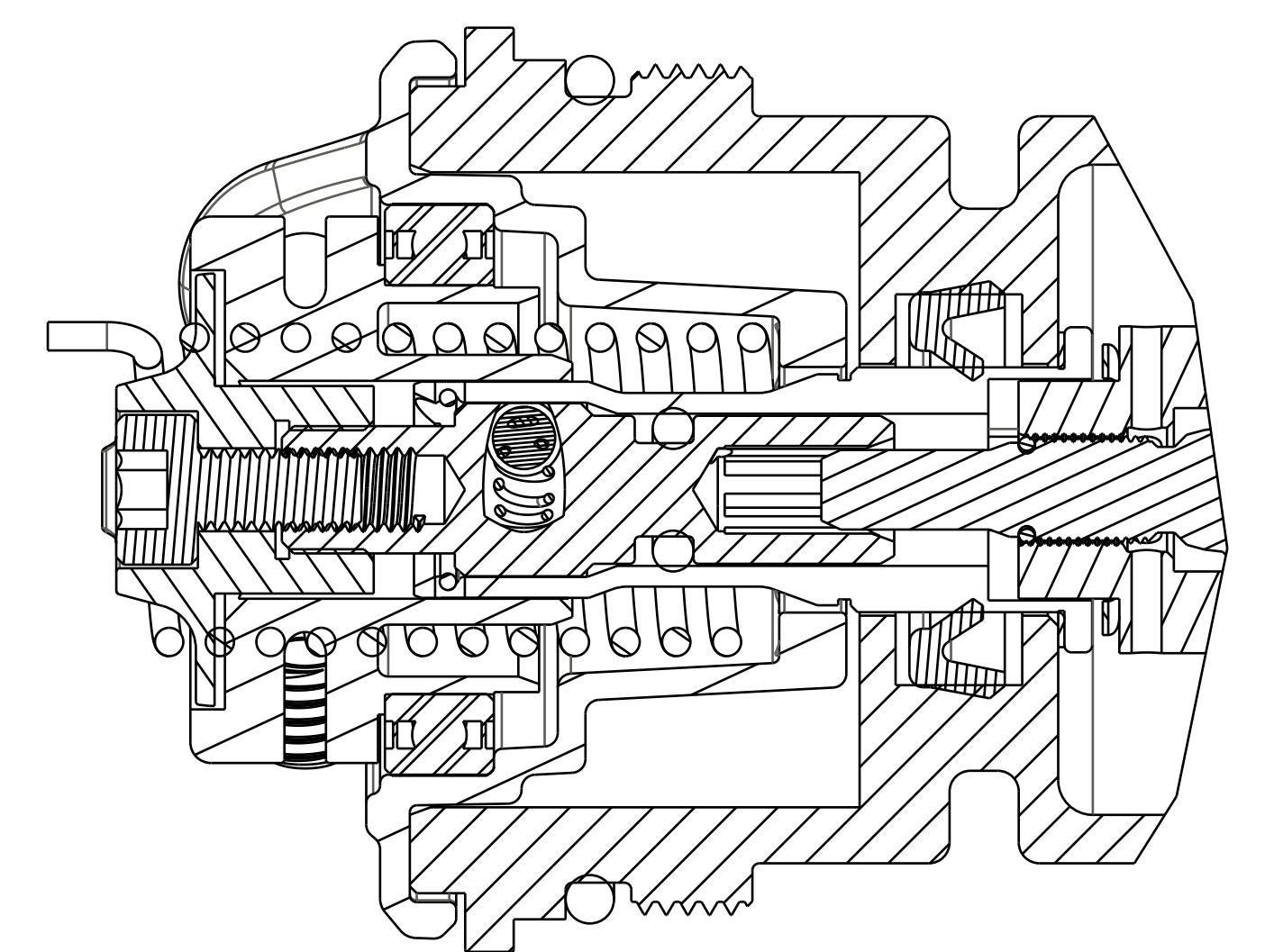
CARTRIDGE ASSY

Topcap Interface Parts:
820-05-455-KIT 2018 FIT4 TopCap Interface Parts F-S Remote, U-Cup, Push-Lock
820-05-456-KIT 2018 FIT4 TopCap Interface Parts F-S Remote, U-Cup, Push-Lock

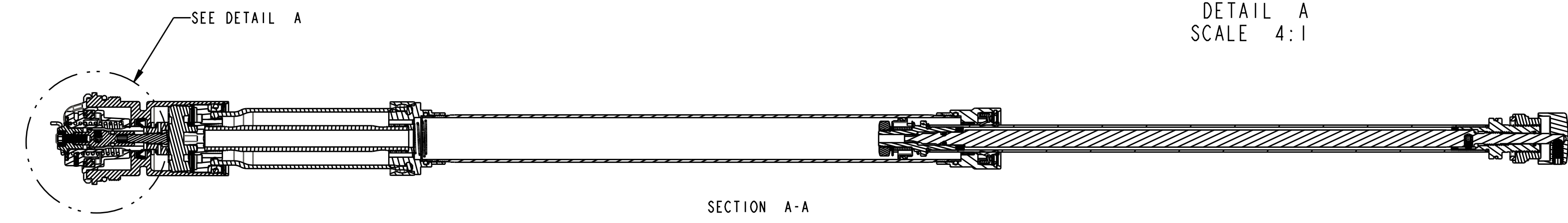
TORQUE:
11±3 IN-LBS

TORQUE:
220±5 IN. LB.

REFERENCE ONLY
(FOR INSTALLATION
INTO FORK)



DETAIL A
SCALE 4:1



SECTION A-A

FOX Factory, Inc.
130 Hangar Way, Watsonville, CA 95076 USA
Ph 831-768-1100 Fax 831-768-9312

TITLE
2018 32mm F-S FIT4 Remote Cartridge Assemblies Complete

SIZE DWG. NO.
D

PLOT SCALE 1.00:1 SHEET 1 OF 1

PROPRIETARY - THIS DOCUMENT CONTAINS CONFIDENTIAL, PROPRIETARY INFORMATION THAT IS FOR PROPERTY USE ONLY. DO NOT DISCLOSE TO OR DUPLICATE FOR OTHERS EXCEPT AS AUTHORIZED BY FOX.