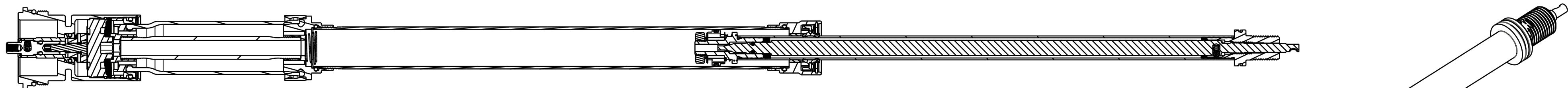


4

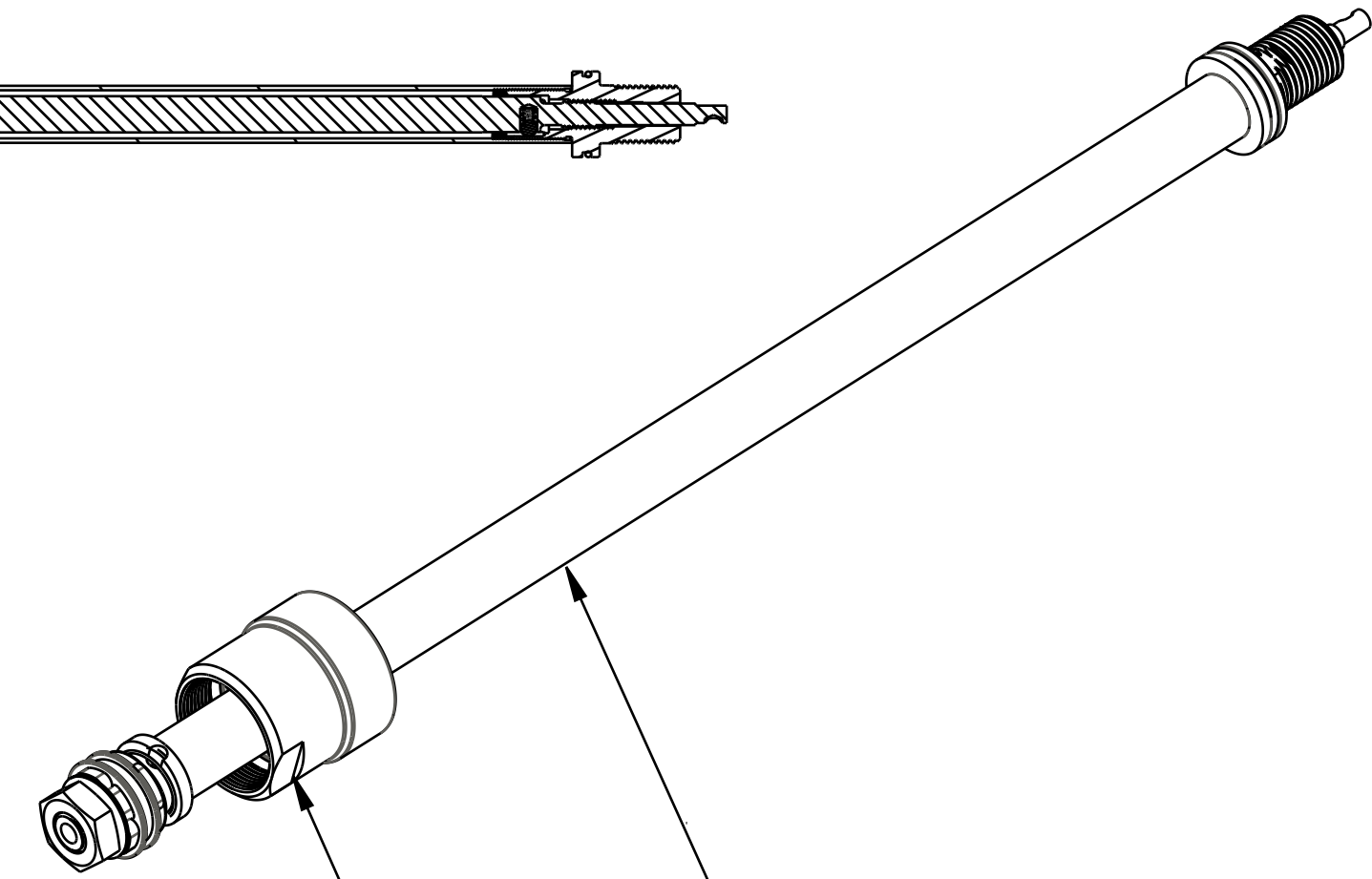
3

2

1



**TOPCAP ASSEMBLIES:**  
 820-05-451-KIT: 2018 34 FIT4 F-S Topcap Assy, Remote, U-Cup, 2 Position, Push-Lock  
 820-05-487-KIT: 2018 34 FIT4 F-S Topcap Assy, Remote, U-Cup, 2 Position, Push-Unlock  
 820-05-464-KIT: 2018 34 FIT4 F-S Topcap Assy, Remote, U-Cup, 3 Position



TORQUE:  
 $55 \pm 5$  IN.LB.

**DAMPER SHAFT ASSEMBLIES:**  
 820-03-469-KIT: 2016 34 26in and 27.5in and 29in FIT4 Damper Shaft Assy  
 820-03-334-KIT: 2016 34 26in and 27.5in and 29in FIT4 Damper Shaft Assy, 120 Max Travel

038-01-073  
 Retaining Ring: Wire [1.280 OD X .024 CS] SS

210-22-920  
 Compression Adjust Coupler, F-S, FIT4

029-08-068  
 Seals: O-Ring [3.0MM ID x 1.5MM CS] Metric, N-70, Static

TORQUE:  
 $55 \pm 5$  IN.LB.

207-11-106  
 (T) Pressure Tube, 15.5 Bore, 160 Max Travel, FIT4

039-00-243  
 Spring: Detent [1.138 TLG X .087 OD X 48 lb/in] SS

010-01-012  
 Air Valve Parts: Ball [Ø 0.1094] E52100 Grade 25 Steel, Chrome

GREASE:  
 THIN LAYER  
 OF SLICK HONEY ON BALL

ASSEMBLE THESE PARTS AFTER OIL FILL

COMPRESS DAMPER SHAFT 3IN BEFORE SEALING DAMPER

- PROPRIETARY -  
 THIS DOCUMENT CONTAINS CONFIDENTIAL, PROPRIETARY INFORMATION  
 THAT IS FOX PROPERTY. DO NOT DISCLOSE TO OR DUPLICATE  
 FOR OTHERS EXCEPT AS AUTHORIZED BY FOX.

		<b>FOX Factory, Inc.</b>	Ph 831-768-1100
		130 Hangar Way, Watsonville, CA 95076 USA	Fax 831-768-9312
TITLE	2019 34 F-S FIT4 Remote Cartridge Assemblies		
SIZE	DWG. NO.		
<b>C</b>			
PLOT SCALE	.00:1	SHEET 1 OF 1	