

002-02-077
Bearing: External, Turcon [.136W x .8690D x .031THK]

029-08-040
Seals: O-Ring [17.0MM ID x 1.0MM CS] Metric, N-70, Static

Piston: Damping, .868in Bore, .250in Post, X2

044-04-070
Valve: [.700 OD X .252 ID X .0045 TH]

043-15-073
Valve: Ring Shim [.700 OD X 0.610 ID X .008 TH]

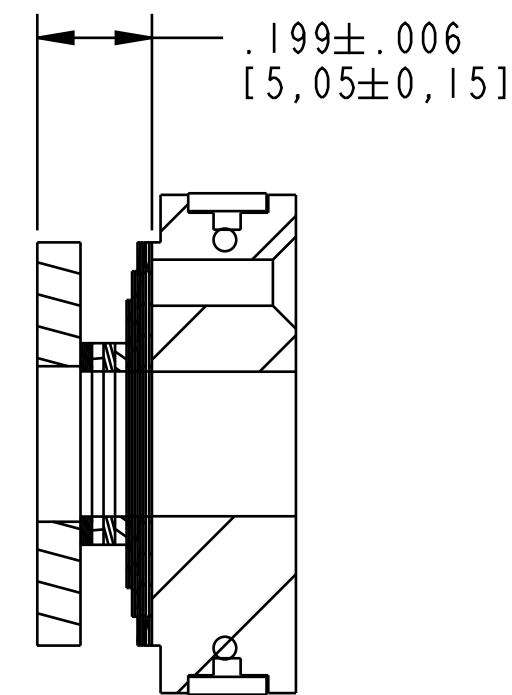
044-06-060
Valve: [.600 X .252 X .006]

044-04-050
Valve: [.500 OD X .252 ID X .0045 TH]

044-20-035
Valve: [.350 OD X .252 ID X .020 TH]

! IMPORTANT:
Piston Orientation

(044-04-070)
(044-04-060)
(044-04-050)
(044-20-035)
233-00-286
Spacer: Topout Plate [.250 ID X .783 OD X .070 THK] Steel



SECTION A-A
SCALE 3:1

- PROPRIETARY -
THIS DOCUMENT CONTAINS CONFIDENTIAL, PROPRIETARY INFORMATION
THAT IS FOX PROPERTY. DO NOT DISCLOSE TO OR DUPLICATE
FOR OTHERS EXCEPT AS AUTHORIZED BY FOX.

| | | | |
|--|----------|---|------------------|
| | | FOX Factory, Inc. | Ph 831-768-1100 |
| | | 130 Hangar Way, Watsonville, CA 95076 USA | Fax 831-768-9312 |
| TITLE Piston Assembly: X2, .868in Bore, CL | | | |
| SIZE | DWG. NO. | 805-00-109-KIT | |
| C | | | |
| PLOT SCALE .60:1 | | SHEET OF 1 | |