

4

3

2

1

IMPORTANT:
LARGER OD OF THE SPRING PERCH
GOES AGAINST THE RETAINING RING



IMPORTANT:
ENSURE VALVES ARE NOT
PINCHED DURING ASSEMBLY

DETAIL A
SCALE 2:1

REBOUND PISTON ASSEMBLIES:
820-03-511-KIT: Piston Assy, Rebound 2019 8mm Shaft, RTF (34mm SC)
820-03-512-KIT: Piston Assy, Rebound 2019 8mm Shaft, RTM (34mm and 36mm)

SEE DETAIL A

038-00-032

Retaining Ring: Smalley VSM-8

TORQUE:
55 IN.LB.

IMPORTANT:
ENSURE RETAINING RING IS FULLY
SEATED IN GROOVE FULL 360°

DAMPER TUBES:

- 207-22-016: Damper Tube: (T) Machined, 8mm OD x 0.2195 in ID, 2019 LIVE 34 Lightweight (SC)
- 207-22-015: Damper Tube: (T) Machined, 8mm OD x 0.2195 in ID, 018 LIVE 36
- 207-22-014: Damper Tube: (T) Machined, 8mm OD x 0.2195 in ID, 018 LIVE 32 29 80-130 & 34
- 207-22-012: Damper Tube: (T) Machined, 8mm OD x 0.2195 in ID, 018 LIVE 32 27.5/29in 80-100 SC

039-00-326

Spring: Rebound Needle, Stiff, FIT CTD

210-22-441

Needle, Rebound, Smaller ID Damper Shaft, 010 RL-RLC

GREASE:
THIN LAYER OF SLICK HONEY
ON BULLET TOOL

LOCTITE:
RED 277

TORQUE:
55 IN.LB.

820-03-569-KIT
Sealhead Assy, 2019 FIT [8mm, M17.56] Trelleborg, O-Ring

REBOUND ADJUSTER ASSEMBLIES:

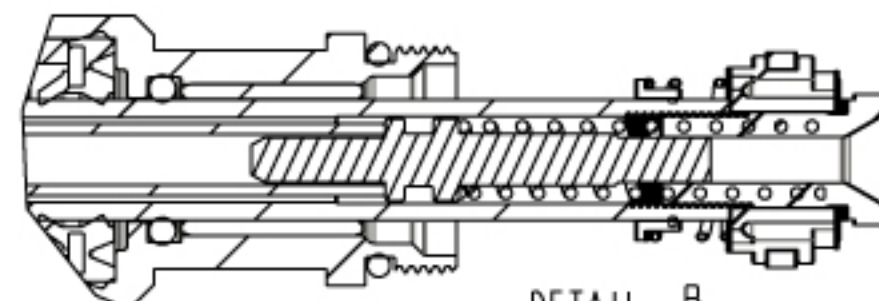
- 820-03-562-KIT: 2019 34 SC FIT4 Rebound Adjuster Assy, 8mm Shaft
- 820-03-185-KIT: 011 36 FIT RLC 160 Rebound Adjuster Assy
- 820-03-282-KIT: 2017 32 iCTD Rebound Adjuster, SC

REBOUND TUBES:

- 204-74-034: Rebound Tube: (T) Machined, 2019 LIVE, 8mm, 34 LWT
- 204-74-018: Rebound Tube: (T) Machined, 2013 32 29in CTD, F/P
- 204-74-029: Rebound Tube: (T) LIVE ALL 34 26/27.5/29 160mm Max
- 204-74-030: Rebound Tube: (T) LIVE 32 27.5 & 29 80-100mm Lightweight

SEE DETAIL B

SECTION A-A



DETAIL B
SCALE 2:1

FOX FOX Factory, Inc. Ph 831-768-1100
130 Hangar Way, Watsonville, CA 95076 USA Fax 831-768-9312

TITLE
**2019 LIVE Valve
Damper Shaft Assemblies AM**

SIZE DWG. NO.

C

PLOT SCALE 0.85:1

SHEET 1 OF 1

- PROPRIETARY -
THIS DOCUMENT CONTAINS CONFIDENTIAL, PROPRIETARY INFORMATION
THAT IS FOX PROPERTY. DO NOT DISCLOSE TO OR DUPLICATE
FOR OTHERS EXCEPT AS AUTHORIZED BY FOX.

4

3

2

ProE ASSEM

4

3

2

1

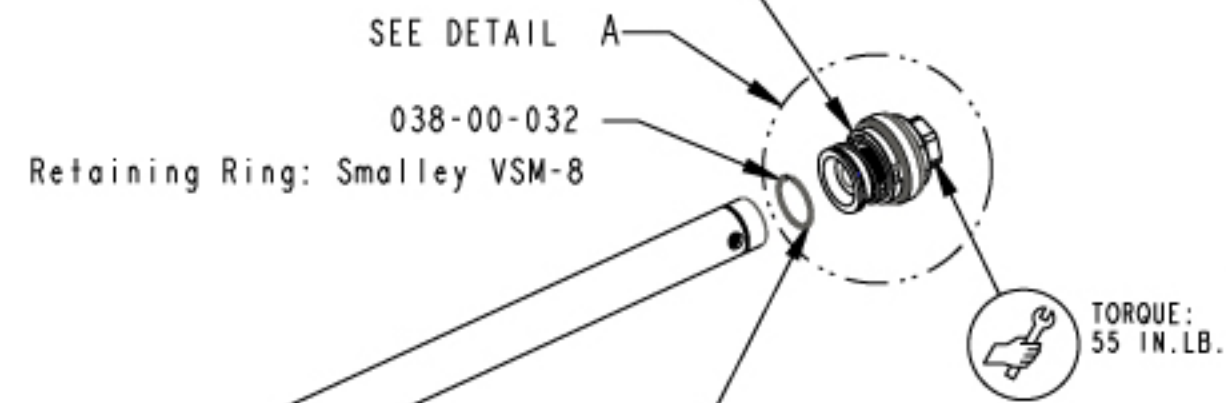
IMPORTANT:
LARGER OD OF THE SPRING PERCH
GOES AGAINST THE RETAINING RING



IMPORTANT:
ENSURE VALVES ARE NOT
PINCHED DURING ASSEMBLY

DETAIL A
SCALE 2:1

REBOUND PISTON ASSEMBLIES:
820-03-511-KIT: Piston Assy, Rebound 2019 8mm Shaft, RTF (34mm SC)
820-03-512-KIT: Piston Assy, Rebound 2019 8mm Shaft, RTM (34mm and 36mm)



DAMPER TUBES:
207-22-016: Damper Tube: (T) Machined, 8mm OD x 0.2195 in ID, 2019 LIVE 34 Lightweight (SC)
207-22-015: Damper Tube: (T) Machined, 8mm OD x 0.2195 in ID, 018 LIVE 36
207-22-014: Damper Tube: (T) Machined, 8mm OD x 0.2195 in ID, 018 LIVE 32 29 80-130 & 34
207-22-012: Damper Tube: (T) Machined, 8mm OD x 0.2195 in ID, 018 LIVE 32 27.5/29in 80-100 SC

039-00-326
Spring: Rebound Needle, Stiff, FIT CTD

210-22-441
Needle, Rebound, Smaller ID Damper Shaft, 010 RL-RLC

GREASE:
THIN LAYER OF SLICK HONEY
ON BULLET TOOL

LOCTITE:
RED 277

TORQUE:
55 IN. LB.

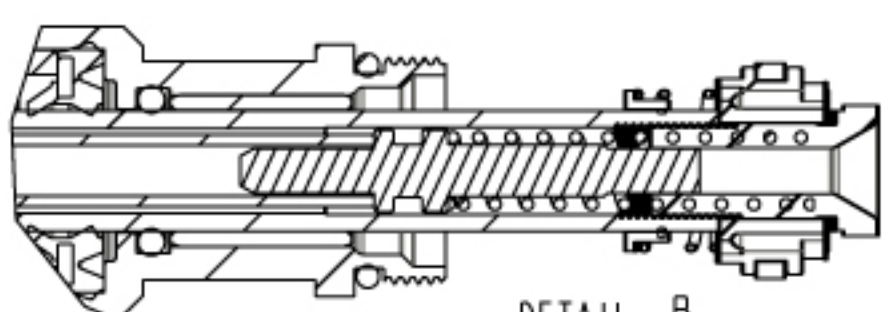
820-03-569-KIT
Sealhead Assy, 2019 FIT [8mm, M17.56] Trelleborg, O-Ring

REBOUND ADJUSTER ASSEMBLIES:
820-03-562-KIT: 2019 34 SC FIT4 Rebound Adjuster Assy, 8mm Shaft
820-03-185-KIT: 011 36 FIT RLC 160 Rebound Adjuster Assy
820-03-282-KIT: 2017 32 iCTD Rebound Adjuster, SC

REBOUND TUBES:
204-74-034: Rebound Tube: (T) Machined, 2019 LIVE, 8mm, 34 LWT
204-74-018: Rebound Tube: (T) Machined, 2013 32 29in CTD, F/P
204-74-029: Rebound Tube: (T) LIVE ALL 34 26/27.5/29 160mm Max
204-74-030: Rebound Tube: (T) LIVE 32 27.5 & 29 80-100mm Lightweight



SECTION A-A



IMPORTANT:
ENSURE RETAINING RING IS FULLY
SEATED IN GROOVE FULL 360°

SEE DETAIL B

- PROPRIETARY -
THIS DOCUMENT CONTAINS CONFIDENTIAL, PROPRIETARY INFORMATION
THAT IS FOX PROPERTY. DO NOT DISCLOSE TO OR DUPLICATE
FOR OTHERS EXCEPT AS AUTHORIZED BY FOX.

FOX FOX Factory, Inc. Ph 831-768-1100
130 Hangar Way, Watsonville, CA 95076 USA Fax 831-768-9312

TITLE
**2019 LIVE Valve
Damper Shaft Assemblies AM**

SIZE DWG. NO.
C
PLOT SCALE 0.85:1 SHEET 1 OF 1

4

3

2

ProE ASSEM