

OFF-ROAD

APPLICATIONS AND PRICING



FEB 21, 2024

TABLE OF CONTENTS

Instructions	03	Shock Specs	08
Parts and Accessories	05	Spring Set-Up	09
Eyelet Chart	07	Shox Need Love Too	10

FIND SHOCKS FOR YOUR VEHICLE

For the most up-to-date application and fitment info for your truck or SUV, visit
[RIDEFOX.COM/OFFROAD](https://ridefox.com/offroad)

FIND MORE INFORMATION

EXPANDED RESOURCES AND TOOLS ARE AVAILABLE FOR DOWNLOAD AT **[RIDEFOX.COM/ORHELP](https://ridefox.com/orhelp)**

[BYPASS LAYOUT GUIDE](#)

[BYPASS TECHNICAL MANUAL](#)

[EXPLODED VIEW SHEETS](#)

[OIL LEVELS](#)

[OWNERS MANUALS](#)

[SERVICE FORM](#)

[SHAFT EYELET CHART](#)

[SPRING SETUP SHEETS](#)

[VALVING CHART](#)

[WARRANTY INFORMATION](#)

HOW TO USE APPLICATION GUIDE

2.0 FACTORY RACE SERIES COIL-OVER EMULSION - 7/8" SHAFT -10 HIEMS										
2.0 x 10.0 COIL-OVER EMULSION - 7/8" SHAFT, -10 HIEMS	26.15	16.18	-	-	1/2 x 1.50	50/70	980-02-354	\$389.95		
2.0 x 12.0 COIL-OVER EMULSION - 7/8" SHAFT, -10 HIEMS	31.15	21.18	-	-	1/2 x 1.50	50/70	980-02-355	\$389.95		
2.0 x 14.0 COIL-OVER EMULSION - 7/8" SHAFT, -10 HIEMS	35.15	24.18	-	-	1/2 x 1.50	50/70	980-02-356	\$399.95		
2.0 x 16.0 COIL-OVER EMULSION - 7/8" SHAFT, -10 HIEMS	40.15	24.18	-	-	1/2 x 1.50	50/70	980-02-422	\$409.95		



1 DIAMETER, SERIES, TYPE, RESERVOIR AND SHAFT

2 BODY DIAMETER

3 TRAVEL LENGTH ROUNDED UP TO THE NEAREST HALF INCH

4 EXTENDED LENGTH

5 COMPRESSED LENGTH

6 RESERVOIR DIAMETER / RESERVOIR LENGTH

7 REMOTE RESERVOIR HOSE DIAMETER / REMOTE RESERVOIR HOSE LENGTH

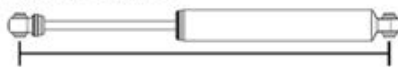
8 MOUNTING BOLT DIAMETER / MOUNTING TAB WIDTH

9 VALVING

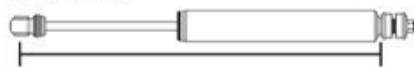
10 PART NUMBER

11 MANUFACTURER'S SUGGESTED RETAIL PRICE

EYELET BUSHING



STEM MOUNT



HOW TO MEASURE EXTENDED, COLLAPSED, & TRAVEL LENGTHS

NOTE: BE SURE TO TAKE INTO CONSIDERATION PIVOT ANGLES OF CV AXLES, DRIVESHAFT, SUSPENSION, AND STEERING COMPONENTS ON BOTH EXTENDED AND COLLAPSED SUSPENSION CYCLES. A LIMIT STRAP AND BUMP STOPS SHOULD BE USED TO LIMIT THE SUSPENSION TRAVEL, NOT THE SHOCK.

STEP 1 (MEASUREMENTS)

EXTENDED (EXT) – SECURE THE FRAME WITH JACK STANDS OR LIFT. REMOVE SHOCKS AND SPRINGS FROM VEHICLE ALLOWING THE SUSPENSION COMPONENTS TO DROP DOWN. ONCE THE DESIRED EXTENDED LENGTH OF THE SUSPENSION TRAVEL IS SET, MEASURE FROM THE CENTER OF THE TOP AND BOTTOM SHOCK MOUNTING POINTS. THIS MEASUREMENT IS YOUR EXTENDED TRAVEL LENGTH.

COLLAPSED (COL) – SECURE THE FRAME WITH JACK STANDS OR LIFT. REMOVE SHOCKS AND SPRINGS FROM VEHICLE. USING A JACK TO COMPRESS THE SUSPENSION TRAVEL TO FULL BOTTOM OUT INCLUDING THE BUMP STOP. MEASURE FROM THE CENTER OF THE TOP AND BOTTOM SHOCK EYELET MOUNTING POINTS. THIS MEASUREMENT IS YOUR COLLAPSED TRAVEL LENGTH.

STEP 2 (TRAVEL)

DETERMINE YOUR REQUIRED SHOCK TRAVEL BY SUBTRACTING THE COLLAPSED LENGTH FROM THE EXTENDED LENGTH. THIS MEASUREMENT IS YOUR TRAVEL LENGTH.

STEP 3 (SELECTING PRODUCT)

USE THE TRAVEL LENGTH TO BEGIN TO NARROW DOWN THE REQUIRED SHOCK FOR THE VEHICLE.

LIMIT STRAP LENGTH SHOULD BE CHANGED TO ACHIEVE THE REQUIRED EXTENDED LENGTH OF THE SELECTED SHOCK.

OPTIONAL SHAFT EYELETS CAN BE PURCHASED TO SLIGHTLY INCREASE OR DECREASE SHOCKS EXTENDED AND COLLAPSED LENGTHS.

ADJUSTERS	PART #	PRICE
2.0 LOW SPEED COMPRESSION (LSC) ADJUSTER		
2.0 LSC ADJUSTER KIT	815-00-074-KIT	\$132.00
2.5 DUAL SPEED COMPRESSION (DSC) ADJUSTER		
2.5 DSC ADJUSTER - 8" ALUMINUM RESERVOIR KIT	810-03-001-KIT	\$330.00
2.5 DSC ADJUSTER - 10" ALUMINUM RESERVOIR KIT	810-03-000-KIT	\$330.00
2.5 DSC ADJUSTER - 14" ALUMINUM RESERVOIR KIT	810-03-002-KIT	\$330.00
QUICK ADJUST BYPASS (QAB) ADJUSTERS		
QUICK ADJUST BYPASS (QAB) - COMPRESSION ADJUSTER KIT	815-03-010-KIT	\$88.00
QUICK ADJUST BYPASS (QAB) - REBOUND ADJUSTER KIT	815-03-011-KIT	\$88.00

EXTERNAL COOLING SYSTEM PARTS	PART #	PRICE
EXTERNAL COOLING SYSTEM ECS2 COOLERS, -8 PORTS		
11.0" ECS2 COOLER, -8 PORTS	810-00-130-KIT	\$330.00
14.0" ECS2 COOLER, -8 PORTS	810-00-131-KIT	\$330.00
17.0" ECS2 COOLER, -8 PORTS	810-00-132-KIT	\$330.00
EXTERNAL COOLING SYSTEM ECS2 COOLERS, -10 PORTS		
11.0" ECS2 COOLER, -10 PORTS	810-00-133-KIT	\$330.00
14.0" ECS2 COOLER, -10 PORTS	810-00-134-KIT	\$330.00
17.0" ECS2 COOLER, -10 PORTS	810-00-135-KIT	\$330.00

RESERVOIR MOUNTING HARDWARE	PART #	PRICE
UNIVERSAL RESERVOIR MOUNTING HARDWARE KIT		
RESERVOIR MOUNTING BLOCK: 1.360" x 1.000" TALL	026-01-000-B	\$3.00
RESERVOIR MOUNTING KIT - HOSE CLAMPS & BLOCKS	803-02-002-KIT	\$16.00
UNIVERSAL RESERVOIR MOUNTING BRACKET KIT - 2 BRACKETS & HARDWARE	803-02-042-KIT	\$39.00
2.0 SMOOTH BODY RESERVOIR MOUNTING CLAMP		
BILLET ALUMINUM 2.0 SMOOTH BODY RESERVOIR MOUNTING CLAMP	803-02-044	\$55.00

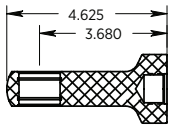
TOOLS	PART #	PRICE
2.0 SPANNER WRENCHES		
2.0 COIL-OVER PRELOAD SPANNER WRENCH, FITS 3/8" RATCHET	398-00-025-A	\$11.00
2.0 COIL-OVER PRELOAD RING SPANNER WRENCH	398-00-370	\$29.00
2.0 PIGGYBACK BRIDGE LOCK RING SPANNER WRENCH	803-00-766	\$55.00
2.5 SPANNER WRENCHES		
2.5 COIL-OVER PRELOAD RING SPANNER WRENCH	803-00-732	\$61.00
2.5 COIL-OVER PRELOAD LOCK RING SPANNER WRENCH	803-00-733	\$61.00
2.5 PIGGYBACK BRIDGE LOCK RING SPANNER WRENCH, FITS 3/8" RATCHET	398-00-025-A	\$11.00
3.0 SPANNER WRENCHES		
3.0 COIL-OVER PRELOAD RING SPANNER WRENCH	803-00-734	\$91.00
3.0 COIL-OVER PRELOAD LOCK RING SPANNER WRENCH	803-00-735	\$95.00
FOX AIR VALVE (FAV) NITROGEN FILLER GAUGE		
0-600psi FOX AIR VALVE (FAV) NITROGEN FILLER GAUGE	802-02-002-A	\$108.00
ASSEMBLY TOOLS		
5/8" SHAFT BULLET - ROD GUIDE / BEARING HOUSING SEAL INSTALLATION TOOL	398-00-094-A	\$13.00
7/8" SHAFT BULLET - ROD GUIDE / BEARING HOUSING SEAL INSTALLATION TOOL	398-00-095-A	\$13.00
1/2" & 5/8" SHAFT CLAMP	803-00-895	\$108.00

PARTS & ACCESSORIES

SERVICE PARTS	PART #	PRICE
VALVE SHIM KIT		
VALVE SHIM KIT - 2.0/2.5/3.0 SHOCKS	803-01-010-A	\$347.00
VALVE SHIM KIT - 2.0/2.5/3.0/3.5 SHOCKS	803-01-023	\$567.00
2.0 SHOCK REBUILD KITS		
NBR/URETHANE SEAL REBUILD KIT - 2.0 AIR SHOCK/BUMP STOP, 1-1/4" SHAFT	803-00-006-A	\$19.00
VITON SEAL REBUILD KIT - 2.0 COIL-OVER/SMOOTH BODY, 7/8" SHAFT, 2.0 RESERVOIR	803-00-545	\$17.00
VITON SEAL REBUILD KIT - 2.0 EXTERNAL BYPASS, 4 TUBE, 7/8" SHAFT, 2.0 RESERVOIR	803-00-683	\$19.00
2.5 SHOCK REBUILD KITS		
NBR/URETHANE SEAL REBUILD KIT - 2.5 AIR SHOCK/BUMP STOP, 1-5/8" SHAFT	803-00-222-A	\$27.00
VITON SEAL REBUILD KIT - 2.5 COIL-OVER/SMOOTH BODY, 7/8" SHAFT, 2.0/2.5 RESERVOIR	803-00-268-A	\$19.00
VITON SEAL REBUILD KIT - 2.5 INTERNAL BYPASS, 7/8" SHAFT, 2.0/2.5 RESERVOIR	803-00-754	\$42.00
VITON SEAL REBUILD KIT - 2.5 EXTERNAL BYPASS, 4 TUBE, 7/8" SHAFT, 2.5 RESERVOIR	803-00-676	\$28.00
3.0 SHOCK REBUILD KITS		
VITON SEAL REBUILD KIT - 3.0 SMOOTH BODY, 7/8" SHAFT, 2.5 RESERVOIR	803-00-268-A	\$19.00
VITON SEAL REBUILD KIT - 3.0 COIL-OVER/SMOOTH BODY, 1" SHAFT, 3.0 RESERVOIR	803-00-562	\$33.00
VITON SEAL REBUILD KIT - 3.0 INTERNAL BYPASS, 7/8" SHAFT, 2.0/2.5 RESERVOIR	803-00-755	\$53.00
VITON SEAL REBUILD KIT - 3.0 EXTERNAL BYPASS, 4 TUBE, 7/8" SHAFT, 2.5 RESERVOIR	803-00-678	\$33.00
VITON SEAL REBUILD KIT - 3.0 EXTERNAL BYPASS, 5 TUBE, 1" SHAFT, 2.5 RESERVOIR	803-00-679	\$50.00
VITON SEAL REBUILD KIT - 3.0 EXTERNAL BYPASS, 5 TUBE, 1-1/8" SHAFT, 3.0 RESERVOIR	803-00-170-A	\$44.00
3.5/4.0/4.4 REBUILD KITS		
VITON SEAL REBUILD KIT - 3.5 EXTERNAL BYPASS, 6 TUBE, 1" SHAFT, 3.0 RESERVOIR	803-00-218-A	\$39.00
VITON SEAL REBUILD KIT - 4.0 EXTERNAL BYPASS, 6 TUBE, 1-1/8" SHAFT, 3.5 RESERVOIR	803-00-795	\$83.00
VITON SEAL REBUILD KIT - 4.4 EXTERNAL BYPASS, 6 TUBE, 1-1/4" SHAFT, 3.0/3.5 RESERVOIR	803-00-579	\$94.00
SUSPENSION FLUID		
FOX JM92 ADVANCED SUSPENSION FLUID - QUART	025-03-011	\$25.00
FOX JM92 ADVANCED SUSPENSION FLUID - GALLON	025-03-012	\$65.00
FOX JM92 ADVANCED SUSPENSION FLUID - 5 GALLON	025-03-013	\$275.00
FOX JM92 ADVANCED SUSPENSION FLUID - 55 GALLON	025-03-014	\$2,855.00

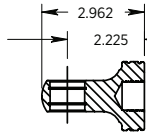
2.0 SHOCKS

7/8 SHAFT
-10 HEIM



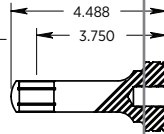
213-01-352-A

7/8 SHAFT
-8 HEIM

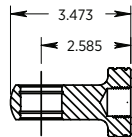


213-01-350-A

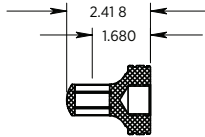
5/8 SHAFT
-8 HEIM



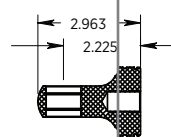
213-01-238-A



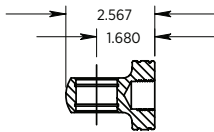
213-01-361-A



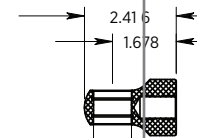
213-01-280-B



213-01-282-B



213-01-357-A

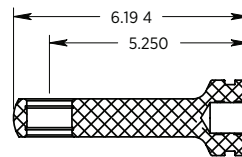


213-01-279-B

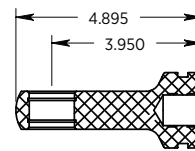
1.000

2.5 | 3.0 BP

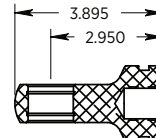
1-1/4 | 1-1/8 | 1 | 7/8 SHAFT
-10 HEIM



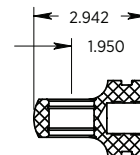
213-01-330-A



213-01-337-A



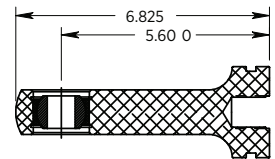
213-01-235-A



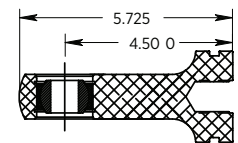
213-01-237-A

3.0 CO | 3.5 | 4.0 | 4.4

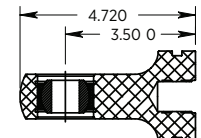
1-1/4 | 1-1/8 | 1 | 7/8 SHAFT
-12 HEIM



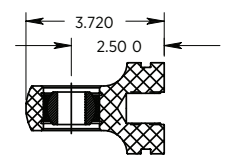
213-01-349-A



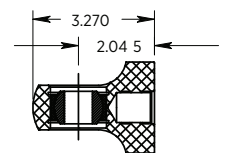
213-01-261



213-01-348-A



213-01-234-A



213-01-317-A

SHOCK SPECS

Name:

Vehicle Discription:

Vehicle Style:

Date:

Phone:

Last Service Date:

FRONT

Coil-Over / Air Shock / Smooth Body

Shock Info

Type	<input type="text"/>	Diameter (in)	<input type="text"/>	Length (in)	<input type="text"/>
Part Number	<input type="text"/>	Eyelet	<input type="text"/>	IFP / Oil Set	<input type="text"/>
Compression Valving	<input type="text"/>	Rebound Valving	<input type="text"/>	Piston Bleed Hole	<input type="text"/>

Bypass

Bypass Info

	Tube 1	Turns Open	Tube 2	Turns Open	Tube 3	Turns Open	Tube 3	Turns Open
Compression Tubes	<input type="text"/>	<input type="text"/>	<input type="text"/>	<input type="text"/>	<input type="text"/>	<input type="text"/>	<input type="text"/>	<input type="text"/>
Rebond Tubes	<input type="text"/>	<input type="text"/>	<input type="text"/>	<input type="text"/>	<input type="text"/>	<input type="text"/>	<input type="text"/>	<input type="text"/>
Other Tubes	<input type="text"/>	<input type="text"/>	<input type="text"/>	<input type="text"/>	<input type="text"/>	<input type="text"/>	<input type="text"/>	<input type="text"/>

Shock Info

Type	<input type="text"/>	Diameter (in)	<input type="text"/>	Length (in)	<input type="text"/>
Part Number	<input type="text"/>	Eyelet	<input type="text"/>	IFP / Oil Set	<input type="text"/>
Compression Valving	<input type="text"/>	Rebound Valving	<input type="text"/>	Piston Bleed Hole	<input type="text"/>

REAR

Coil-Over / Air Shock / Smooth Body

Shock Info

Type	<input type="text"/>	Diameter (in)	<input type="text"/>	Length (in)	<input type="text"/>
Part Number	<input type="text"/>	Eyelet	<input type="text"/>	IFP / Oil Set	<input type="text"/>
Compression Valving	<input type="text"/>	Rebound Valving	<input type="text"/>	Piston Bleed Hole	<input type="text"/>

Bypass

Bypass Info

	Tube 1	Turns Open	Tube 2	Turns Open	Tube 3	Turns Open	Tube 3	Turns Open
Compression Tubes	<input type="text"/>	<input type="text"/>	<input type="text"/>	<input type="text"/>	<input type="text"/>	<input type="text"/>	<input type="text"/>	<input type="text"/>
Rebond Tubes	<input type="text"/>	<input type="text"/>	<input type="text"/>	<input type="text"/>	<input type="text"/>	<input type="text"/>	<input type="text"/>	<input type="text"/>
Other Tubes	<input type="text"/>	<input type="text"/>	<input type="text"/>	<input type="text"/>	<input type="text"/>	<input type="text"/>	<input type="text"/>	<input type="text"/>

Shock Info

Type	<input type="text"/>	Diameter (in)	<input type="text"/>	Length (in)	<input type="text"/>
Part Number	<input type="text"/>	Eyelet	<input type="text"/>	IFP / Oil Set	<input type="text"/>
Compression Valving	<input type="text"/>	Rebound Valving	<input type="text"/>	Piston Bleed Hole	<input type="text"/>

BUMP STOP

Bump Info

Type	<input type="text"/>	Diameter (in)	<input type="text"/>	Length (in)	<input type="text"/>
Part Number	<input type="text"/>	Eyelet	<input type="text"/>	IFP / Oil Set	<input type="text"/>
Compression Valving	<input type="text"/>	Rebound Valving	<input type="text"/>	Piston Bleed Hole	<input type="text"/>

NOTES:

Date:	
Phone:	
Last Service Date:	

REAR

Step #1 Record general measurements

Shock Info

Coil-Over Diameter & Length (in)	
Bypass Diameter & Length (in)	

Spring Info

Top Spring Length & Rate (in) & (lbs)	
Bottom Spring Length & Rate (in) & (lbs)	

Shock Info

Coil-Over Diameter & Length (in)	
Bypass Diameter & Length (in)	

Spring Info

Top Spring Length & Rate (in) & (lbs)	
Bottom Spring Length & Rate (in) & (lbs)	

Step #2 With vehicle on the ground record measurements

Top Spring Length (in)	
Bottom Spring Length (in)	
Spring Divider to Cross-Over Ring (in)	
Bypass Shaft Showing (in)	
Coil-Over Shaft Showing (in)	
IMPORTANT: If Spring Divider is sitting on the Cross-Over at Ride Height. Raise vehicle until Spring Divider separates from Cross-Over Ring and measure Coil-Over Shaft Showing (in)	
Ride Height - Ground to Skid (in)	

Top Spring Length (in)	
Bottom Spring Length (in)	
Spring Divider to Cross-Over Ring (in)	
Bypass Shaft Showing (in)	
Coil-Over Shaft Showing (in)	
IMPORTANT: If Spring Divider is sitting on the Cross-Over at Ride Height. Raise vehicle until Spring Divider separates from Cross-Over Ring and measure Coil-Over Shaft Showing (in)	
Ride Height - Ground to Skid (in)	

Step #3 With vehicle jacked up and wheels at full droop record measurements

Top Spring Length (in)	
Bottom Spring Length (in)	
Spring Divider to Cross-Over Ring (in)	
Bypass Shaft Showing (in)	
Coil-Over Shaft Showing (in)	

Top Spring Length (in)	
Bottom Spring Length (in)	
Spring Divider to Cross-Over Ring (in)	
Bypass Shaft Showing (in)	
Coil-Over Shaft Showing (in)	

NOTES:

[illegible]

SHOX NEED ♥ TOO

INSTALLATION GUIDELINES

Always use a chassis lift for the installation of shocks, and make certain that the raised vehicle is securely attached to the lift to prevent the vehicle from slipping, falling, or moving during the installation process.

DO NOT install any FOX products without the necessary special tools, expertise and chassis lift, or you will subject yourself to the risk of serious INJURY or DEATH. If you elect to not use a chassis lift (which election may result in SERIOUS INJURY or DEATH), ensure that the vehicle is on level ground, that all tires on the ground during installation are blocked to prevent vehicle movement, that at least two tires are on the ground at all times, and that adequately secured jack stands are used to support the vehicle. NEVER get under the vehicle until you have checked to ensure that the vehicle will be stable during installation.

FOX direct-replacement shocks are designed to fit your vehicle's shock mounts with no modifications with the exception of reservoir placement on specific models and applications.

In most cases, FOX direct replacement, smooth body shocks are mounted with the shock body oriented on top.

SERVICE AND UPGRADES

Have your FOX shocks serviced or upgraded by FOX technicians. Call our Offroad and Truck Service Center to go over the service and upgrade options available for your shocks. Once you have setup your service or upgrades you will receive a return authorization number and shipping instructions.

FOX El Cajon Service Center

750 Vernon Way Suite 101
El Cajon, CA 92020
619.768.1800
orservice@ridefox.com

SERVICE INTERVALS

- Street Use: Every 50,000 miles
- Street & Off-Road Use: Every 10,000 miles
- Off-Road Use: Every 1,000 miles

SERVICE MENUS & PRICING

Please visit [RIDEFOX.COM/SERVICE](https://ridefox.com/service)



#RIDEFOX

RIDEFOX.COM

©FOX FACTORY, INC. 2019

FOX TRUCK & OFF-ROAD DIVISION

750 Vernon Way Suite 101. El Cajon, CA 92020

619.768.1800 or 1.800.FOX.SHOX

SALES orsales@ridefox.com

SERVICE orservice@ridefox.com

FIND SHOCKS FOR YOUR OFF-ROAD VEHICLE ridefox.com/offroad

GET SERVICED ridefox.com/service



**WARNING: Cancer and
Reproductive Harm –**
www.P65Warnings.ca.gov