

4

3

2

1

019-01-115
Fastener Standard (Metric): Screw, Socket Head, M2.5 X 8

210-24-357
Damping Adj Part: Knob, Comp Selector, 32 Grip

820-05-461-KIT
2018 Grip 32 Rhythm Topcap Interface Parts

029-30-000
Seals: O-Ring Custom: [1.066 C.S. X .742 ID] N-70, Static

TORQUE:
4±1 IN.LB.

GREASE:
THIN LAYER
OF SLICK HONEY

241-01-002-C
Fastener, Custom: Crush Washer, Plastic, R_RL_RLC

820-05-326-KIT
2017 34 29in Grip Bottom Stud Interface Parts

018-01-004-A
Fastener, Standard: Screw [#8-32 X 0.250 TLG]

TORQUE:
5.0±0.5 IN.LB.

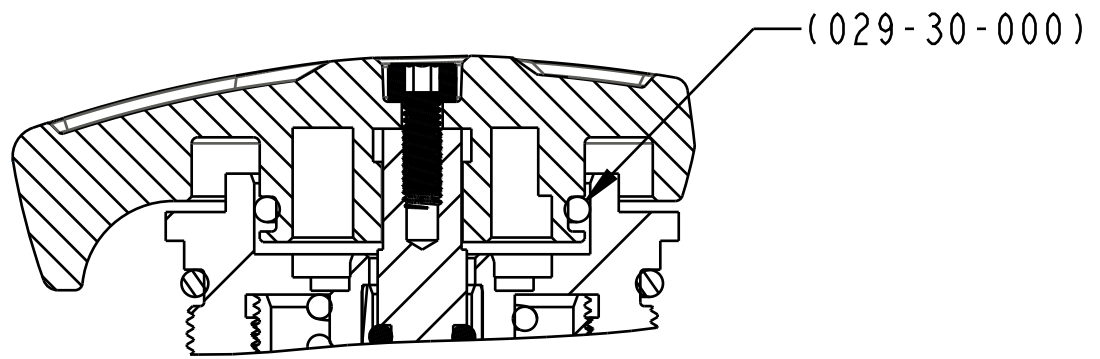
LOCTITE:
BLUE 242 OR 243
ONE DROP

210-24-032
Knob, Rebound Adjust, Grip Extruded, Red, 29

241-00-005
Fastener, Custom: Nut, Bottom, R_RL_RLC

REFERENCE ONLY
(FOR INSTALLATION
INTO FORK)

TORQUE:
50±5
IN-LBS



SECTION A-A
SCALE 2.000

		FOX Factory, Inc.	Ph 831-768-1100
		130 Hangar Way, Watsonville, CA 95076 USA	Fax 831-768-9312
TITLE			
2019 32 Rhythm 29 80-120, QR9 & QR15X100, Grip Cart Assy Complete			
SIZE		DWG. NO.	
C		820-18-107-KIT	
PLOT SCALE 0.75:1		SHEET 1 OF 2	

PROPRIETARY
THIS DOCUMENT CONTAINS CONFIDENTIAL, PROPRIETARY INFORMATION
THAT IS FOX PROPERTY. DO NOT DISCLOSE TO OR DUPLICATE
FOR OTHERS EXCEPT AS AUTHORIZED BY FOX.

4

3

2

1