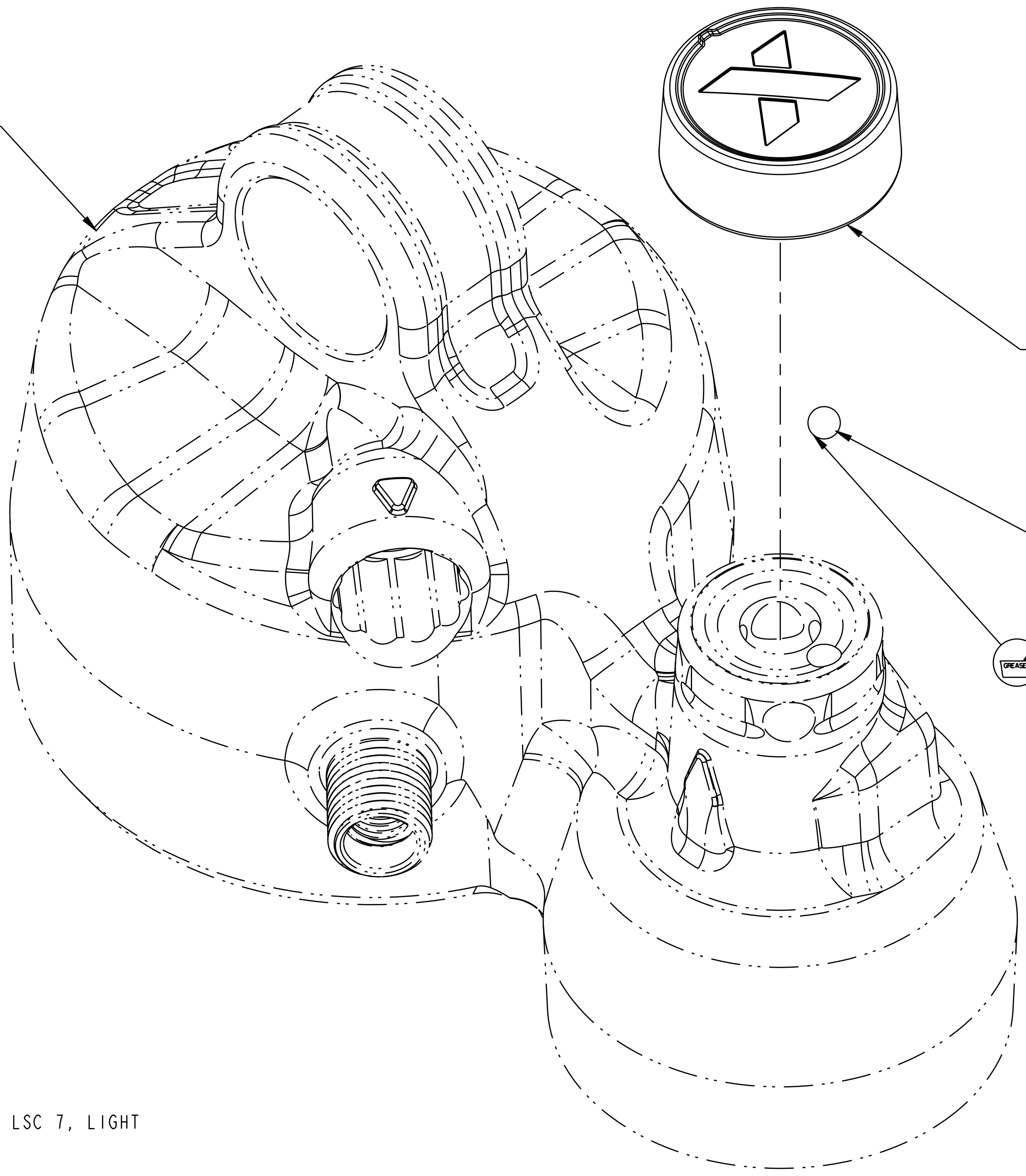


SEE DETAIL A

SCALE 2:1

EYELET SHOWN FOR REFERENCE ONLY



Adjuster Cover, no LSC, 2022 FLOAT X & DHX

Ball [Ø 0.0938] Steel

GREASE:  
THICK LAYER OF  
ULTRAPLEX LT2



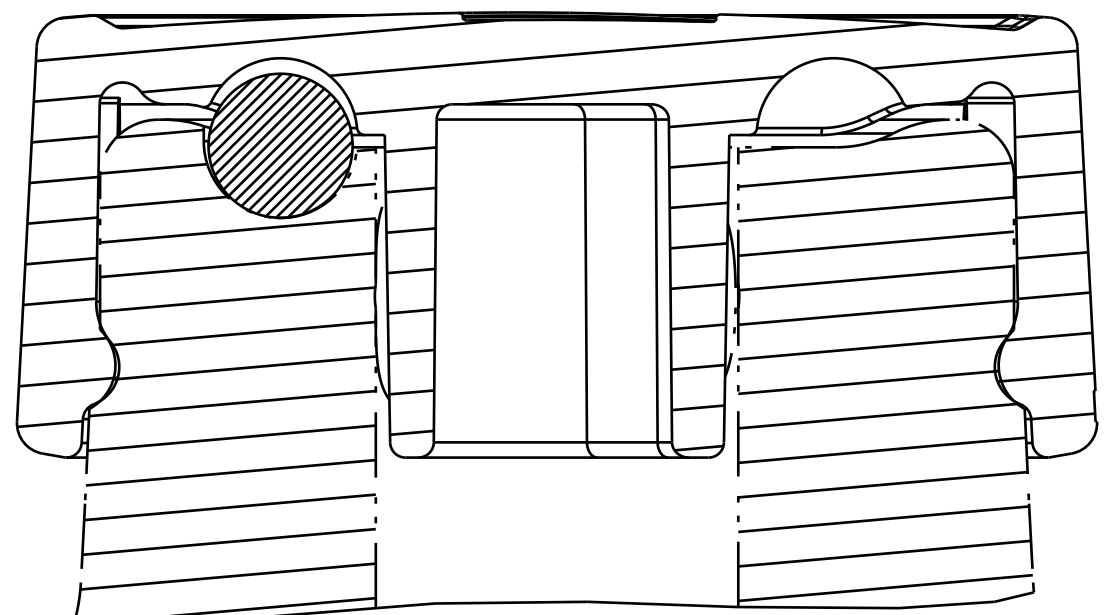
LSC 10, OPEN

LSC 1, FIRM

LSC 7, LIGHT

**ADJUSTER COVER ORIENTATION**

ALIGN NOTCH IN ADJUSTER COVER WITH DESIRED LSC POSITION.  
THIS EXAMPLE SHOWS THE ALIGNMENT TO LSC 10 (OPEN) POSITION



SECTION A-A  
SCALE 8:1

DETAIL A  
SCALE 8:1

LSC 4, MEDIUM

PROPRIETARY - THIS DOCUMENT CONTAINS CONFIDENTIAL, PROPRIETARY INFORMATION THAT IS FOR PROPERTY. DO NOT DISCLOSE TO OR DUPLICATE FOR OTHERS EXCEPT AS AUTHORIZED BY FOX.

<b>FOX Factory, Inc.</b> 130 Hangar Way, Watsonville, CA 95076 USA Ph 831-768-1100 Fax 831-768-9312	
TITLE <b>Eyelet Sub Assy: no LSC,          2022 FLOAT X &amp; DHX</b>	
SIZE DWG. NO. <b>D   808-17-471-KIT</b>	PLOT SCALE <b>4:1</b>
SHEET 1 OF 1	