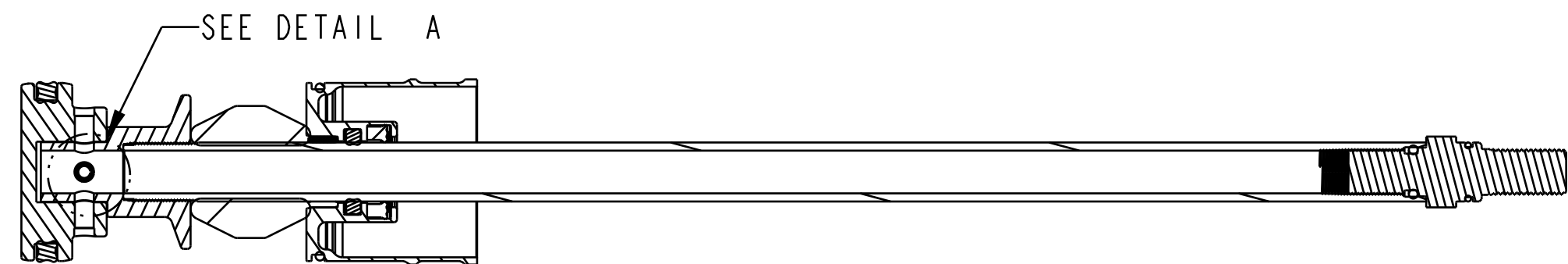


4

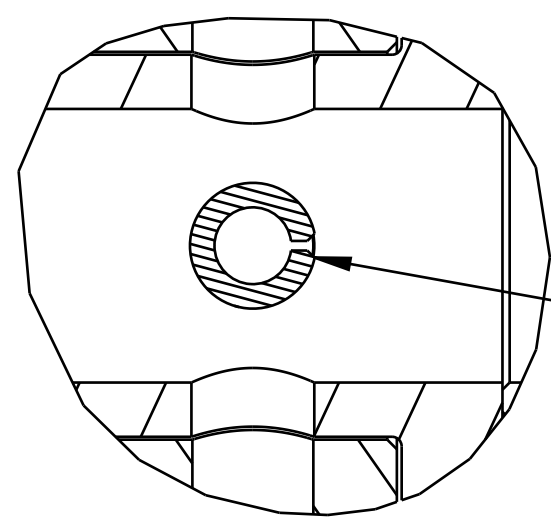
3

2

1



SECTION A-A



DETAIL A  
SCALE 5:1

3 ORIENT GAP IN PIN TOWARDS BASE STUD  $\pm 15^\circ$

Seals: O-Ring [8.0MM ID x 1.0MM CS] Metric, N-70, Static

234-04-655  
Base Stud: Float, 0.305-48 Thread

Seals: O-Ring [6.0mm ID x 1.5mm CS] Metric, N-70, Static

029-08-060

029-08-022

GREASE:  
THIN LAYER  
OF SLICK HONEY

TORQUE:  
50 $\pm$ 5 IN.LB

GREASE:  
THIN LAYER  
OF SLICK HONEY

820-02-327-KIT  
NEG PLATE SUBASSEMBLY

234-04-629  
Topout Bumper, FLOAT NA

LOCTITE:  
RED 262

LOCTITE:  
1-2 DROPS  
RED 262

GREASE:  
THIN LAYER  
OF SLICK HONEY

SHAFT

TORQUE:  
50 $\pm$ 5 IN.LB.

234-04-820  
PISTON BASE, INTERNALLY THREADED

NOTE: PRESS PIN UNTIL CENTERED 3

060-01-002  
Pin: Spring [Ø 0.125 X 0.750 TLG] Spring Steel, Zinc

222-01-280  
PISTON, FLOAT NA 2

035-06-212  
SEAL: Q-RING

NOTE: VERIFY SEAL IS NOT TWISTED  
AFTER INSTALL

**FOX** FOX Factory, Inc. Ph 831-768-1100  
130 Hangar Way, Watsonville, CA 95076 USA Fax 831-768-9312

TITLE  
**Air Shaft, Long Travel,  
FLOAT NA 2**

SIZE DWG. NO.  
**C**  
PLOT SCALE 1:1:1 SHEET 1 OF 1

PROPRIETARY  
THIS DOCUMENT CONTAINS CONFIDENTIAL, PROPRIETARY INFORMATION  
THAT IS FOX PROPERTY. DO NOT DISCLOSE TO OR DUPLICATE  
FOR OTHERS EXCEPT AS AUTHORIZED BY FOX.

4

3

2

ProE ASSEM