

4

3

2

1

D

D

Damper Shaft Assemblies:
 820-03-333-KIT 2016 32 26in and 27.5in FIT4 Damper Shaft Assy, Long Travel
 820-03-467-KIT 2016 32 26in and 27.5in FIT4 Damper Shaft Assy
 820-03-468-KIT 2016 32 29in FIT4 Damper Shaft Assy

Topcap Assemblies:
 820-05-486-KIT 2018 32 FIT4 F-S Topcap Assy, Long Travel, Remote, U-Cup, 2 Position, Push-Unlock
 820-05-450-KIT 2018 32 FIT4 F-S Topcap Assy, Long Travel, Remote, U-Cup, 2 Position, Push-Lock
 820-05-463-KIT 2018 32 FIT4 F-S Topcap Assy, Long Travel, Remote, U-Cup, 3 Position

ASSEMBLE 002-02-011 AT THIS LEVEL

038-01-073
Retaining Ring: Wire [.280 OD X .024 CS] SS

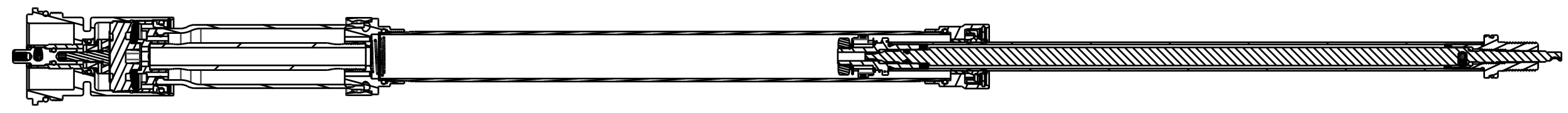
210-22-920
Compression Adjust Coupler, F-S, FIT4

029-08-068
Seals: O-Ring [3.0MM ID x 1.5MM CS] Metric, N-70, Static

TORQUE:
55±5 IN.LB.

TORQUE:
55±5 IN.LB.

Pressure Tube:
 207-11-102 (T) Pressure Tube, 15.5 Bore, 120 Max Travel, FIT4
 207-11-103 (T) Pressure Tube, 15.5 Bore, 130 Max Travel, FIT4
 207-11-105 (T) Pressure Tube, 15.5 Bore, 150 Max Travel, FIT4



039-00-243
Spring: Detent [.138 TLG X .087 OD X 48 lb/in] SS

010-01-012
Air Valve Parts: Ball [Ø 0.1094] E52100 Grade 25 Steel, Chrome

GREASE:
THIN LAYER
OF SLICK HONEY ON BALL

COMPRESS DAMPER SHAFT 3IN BEFORE SEALING DAMPER

ASSEMBLE THESE PARTS AFTER OIL FILL

PROPRIETARY -
THIS DOCUMENT CONTAINS CONFIDENTIAL, PROPRIETARY INFORMATION
THAT IS FOX PROPERTY. DO NOT DISCLOSE TO OR DUPLICATE
FOR OTHERS EXCEPT AS AUTHORIZED BY FOX.

FOX Factory, Inc.
 130 Hangar Way, Watsonville, CA 95076 USA
 Ph 831-768-1100
 Fax 831-768-9312

TITLE
2018 32mm 26in/27.5in/29in 110-150
F-S FIT4 Remote Cartridge Assy

SIZE DWG. NO.
C

PLOT SCALE | .00:1 |

SHEET | OF | 1

4

3

2

1

A

A

ProE ASSEM