

4

3

2

1

D

D

C

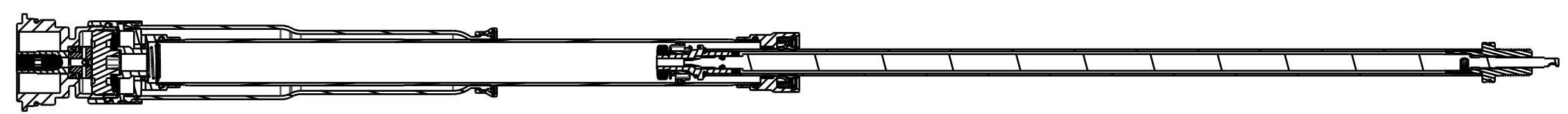
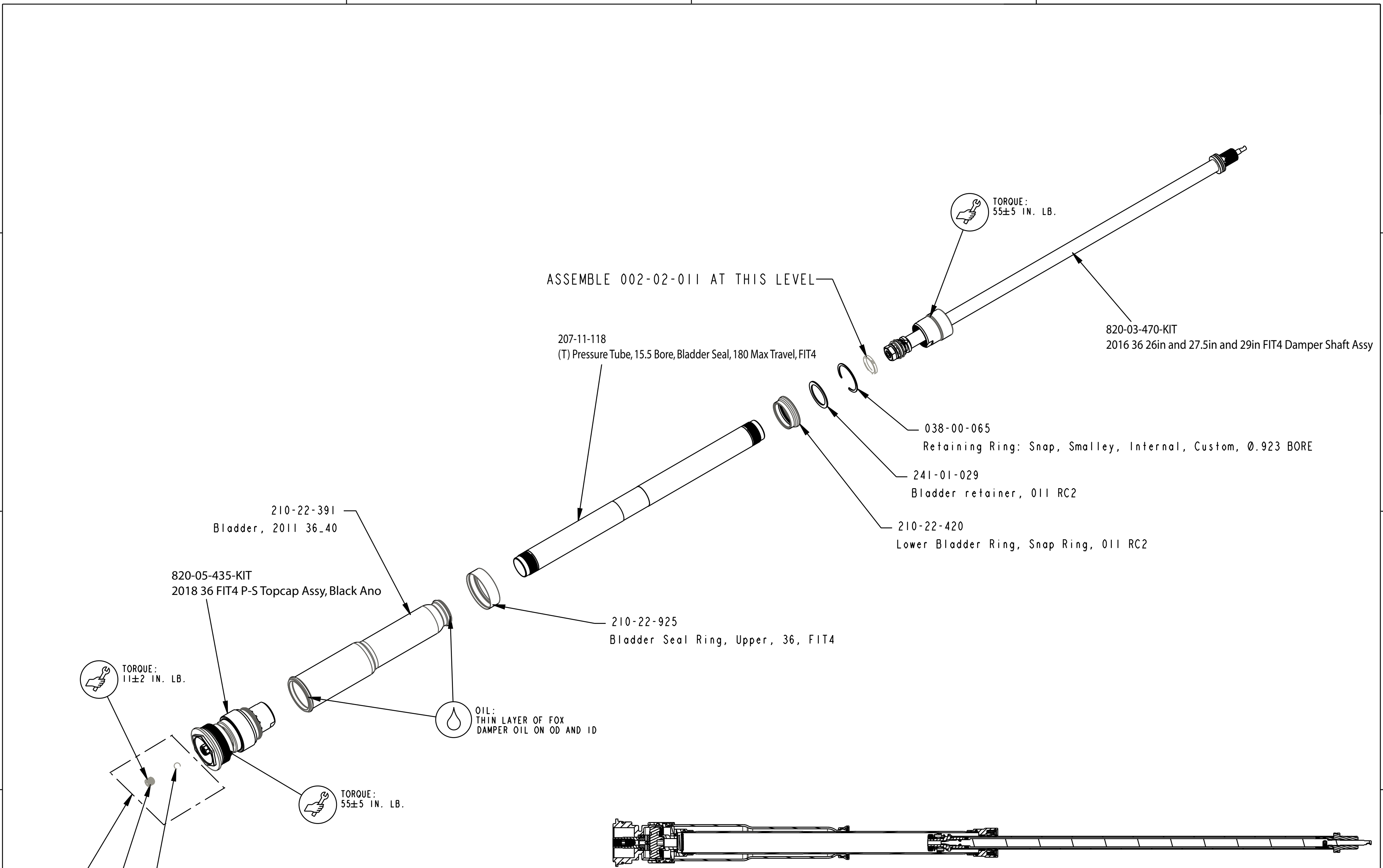
C

B

B

A

A



USE KNOB 210-22-915 TO KEEP ADJUSTER FROM MOVING WHEN TIGHTENING SET SCREW 019-01-107. DO NOT TIGHTEN AGAINST ADJUSTER HARD STOPS.

ASSEMBLE THESE PARTS AFTER OIL FILL

PROPRIETARY - THIS DOCUMENT CONTAINS CONFIDENTIAL, PROPRIETARY INFORMATION THAT IS FOX PROPERTY. DO NOT DISCLOSE TO OR DUPLICATE FOR OTHERS EXCEPT AS AUTHORIZED BY FOX.

FOX Factory, Inc. 130 Hangar Way, Watsonville, CA 95076 USA Ph 831-768-1100 Fax 831-768-9312	
TITLE 2018 36mm 26in/27.5in/29in 160-180 P-S FIT4 Cartridge Assembly	
SIZE C	DWG. NO. [Blank]
PLOT SCALE 0.50 : 1	SHEET 1 OF 1

4

3

2

1

ProE ASSEM