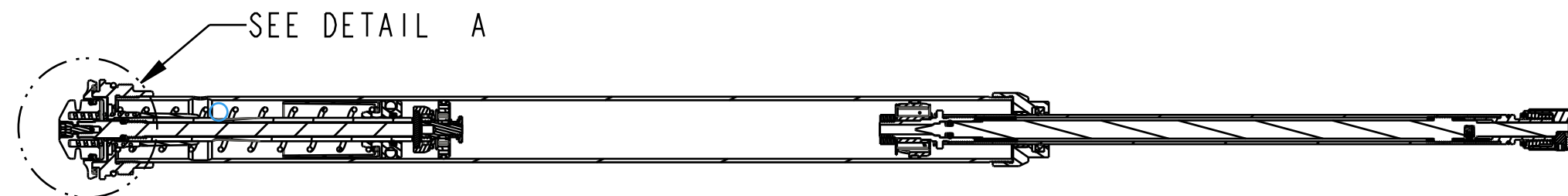


4

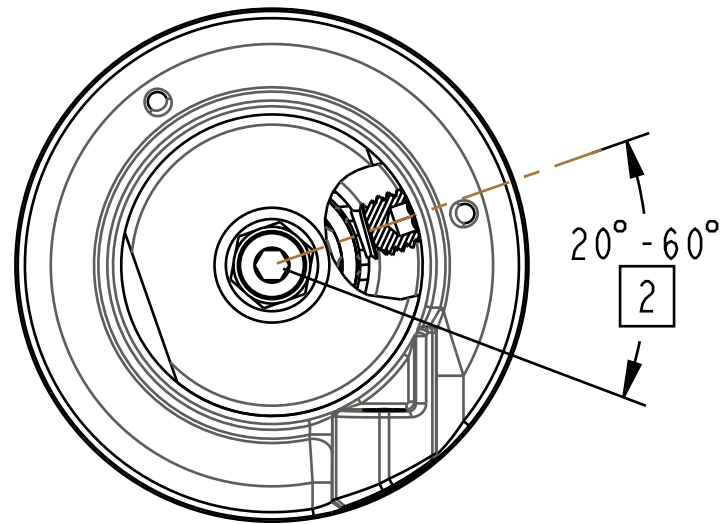
3

2

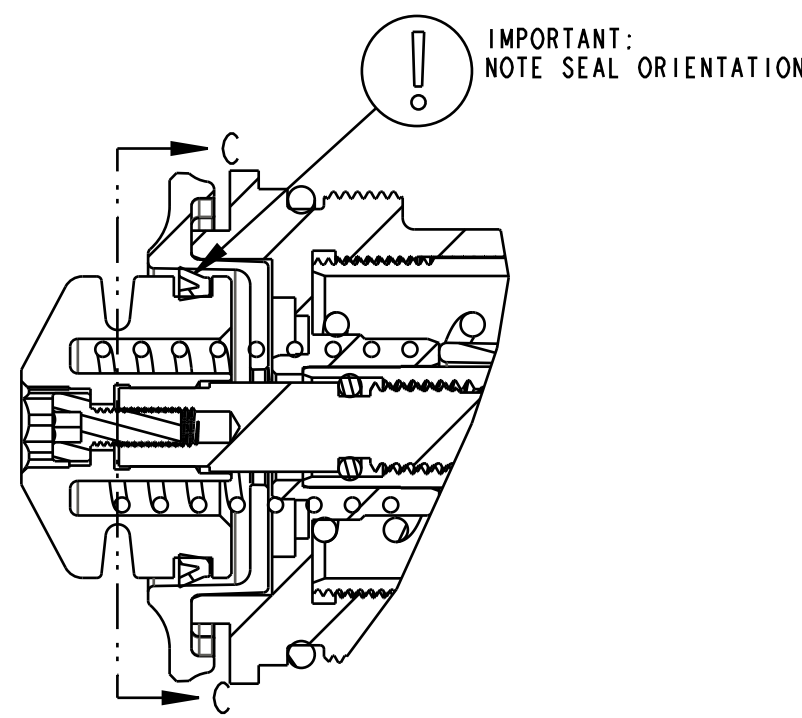
1



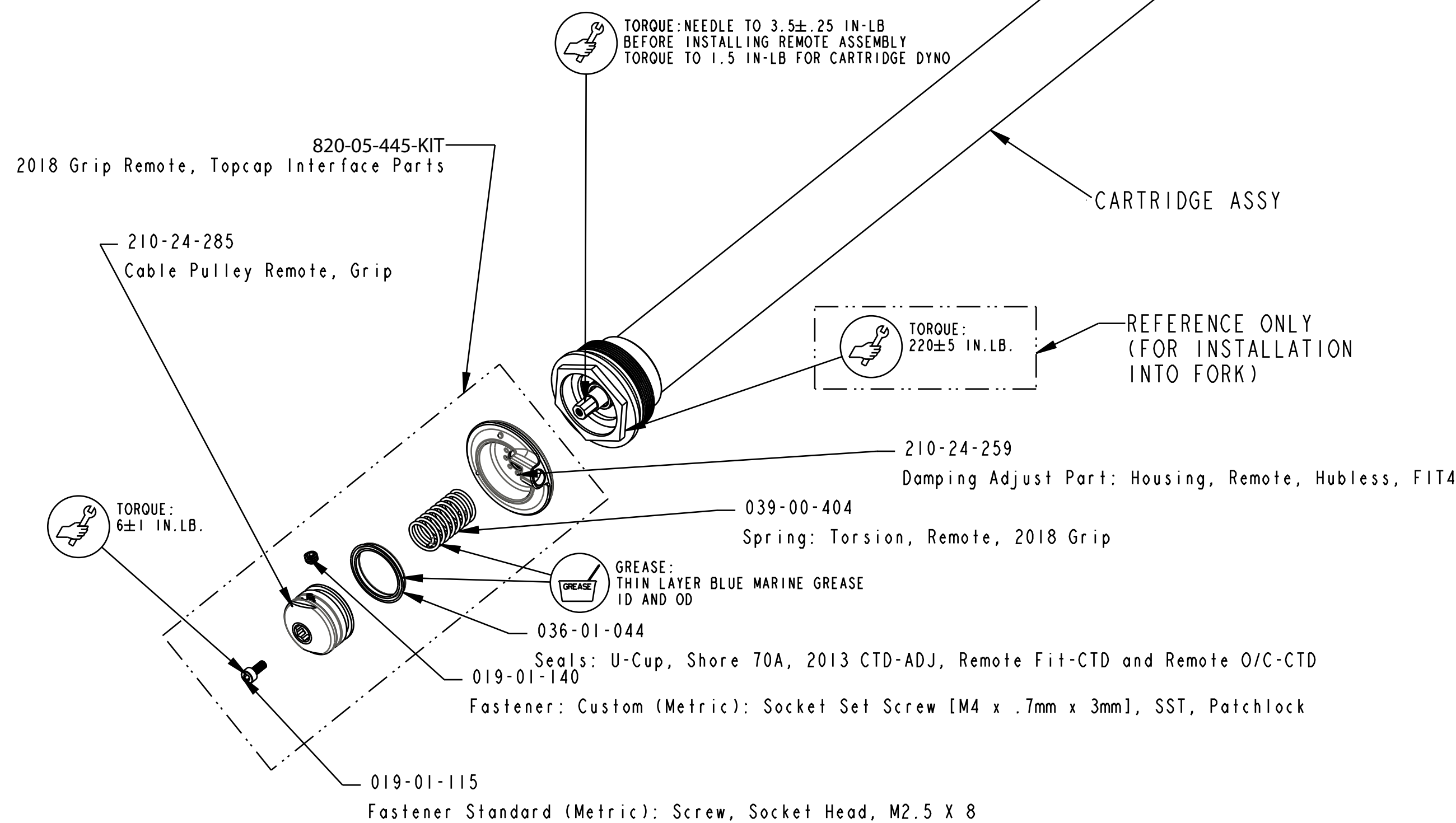
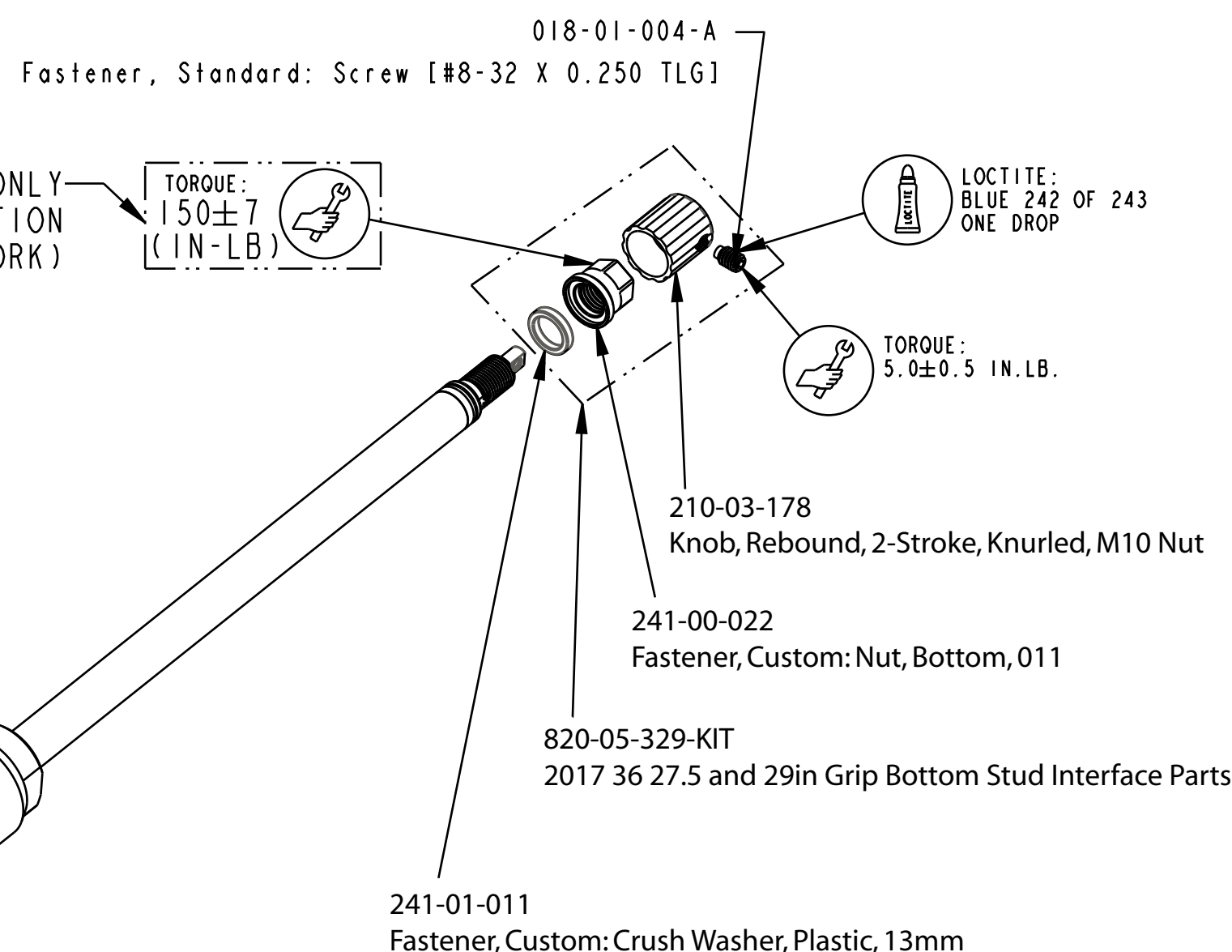
SECTION A-A
SCALE 0.500



SECTION C-C



DETAIL A
SCALE 2.000



- NOTES (UNLESS OTHERWISE SPECIFIED):
1. REMOTE HOUSING MUST BE ROTATED A FULL 360° CCW AFTER INSTALLING TO ACHIEVE PROPER PRELOAD ON TORSION SPRING.
 2. WHEN LOCKED OUT, SET SCREW MUST BE 20°-60° FROM CABLE BOSS (AT 6IN-LB).
 3. PULLEY MUST RETURN FREELY AFTER LOCKOUT (FROM FORCE OF TORSION SPRING ALONE).

PROPRIETARY - THIS DOCUMENT CONTAINS CONFIDENTIAL, PROPRIETARY INFORMATION THAT IS FOX PROPERTY. DO NOT DISCLOSE TO OR DUPLICATE FOR OTHERS EXCEPT AS AUTHORIZED BY FOX.

FOX		FOX Factory, Inc.	Ph 831-768-1100
130 Hangar Way, Watsonville, CA 95076 USA		Fax 831-768-9312	
TITLE 2018 36 27.5 & 29 130-160, Grip Remote Cart Assy Complete			
SIZE C	DWG. NO. 820-08-824-KIT		
PLOT SCALE 0.75		SHEET 1 OF 1	

4

3

2

1

ProE ASSEM