

REFERENCE ONLY
(FOR INSTALLATION
INTO FORK)

TORQUE:
50±5 IN-LBS

REBOUND KNOBS:
210-22-523: Knob: Rebound Adj, Extruded
210-24-006: Knob, Rebound Adjust, Extruded, 2016 32 29in 15x110QR

TORQUE:
5.0±1.0 IN. LB.

LOCTITE:
BLUE 242
ONE DROP

018-01-004-A
Fastener, Standard: Screw [#8-32 X 0.250 TLG]

241-00-005
Fastener, Custom: Nut, Bottom, R_RL_RLC

241-01-002-C
Fastener, Custom: Crush Washer, Plastic, R_RL_RLC

BASE STUD INTERFACE PARTS:
820-05-334-KIT: 2016 FIT4 Bottom Stud Interface Parts 32
820-05-381-KIT: 2016 FIT4 Bottom Stud Interface Parts 32 29in 15x110QR

CARTRIDGE ASSY

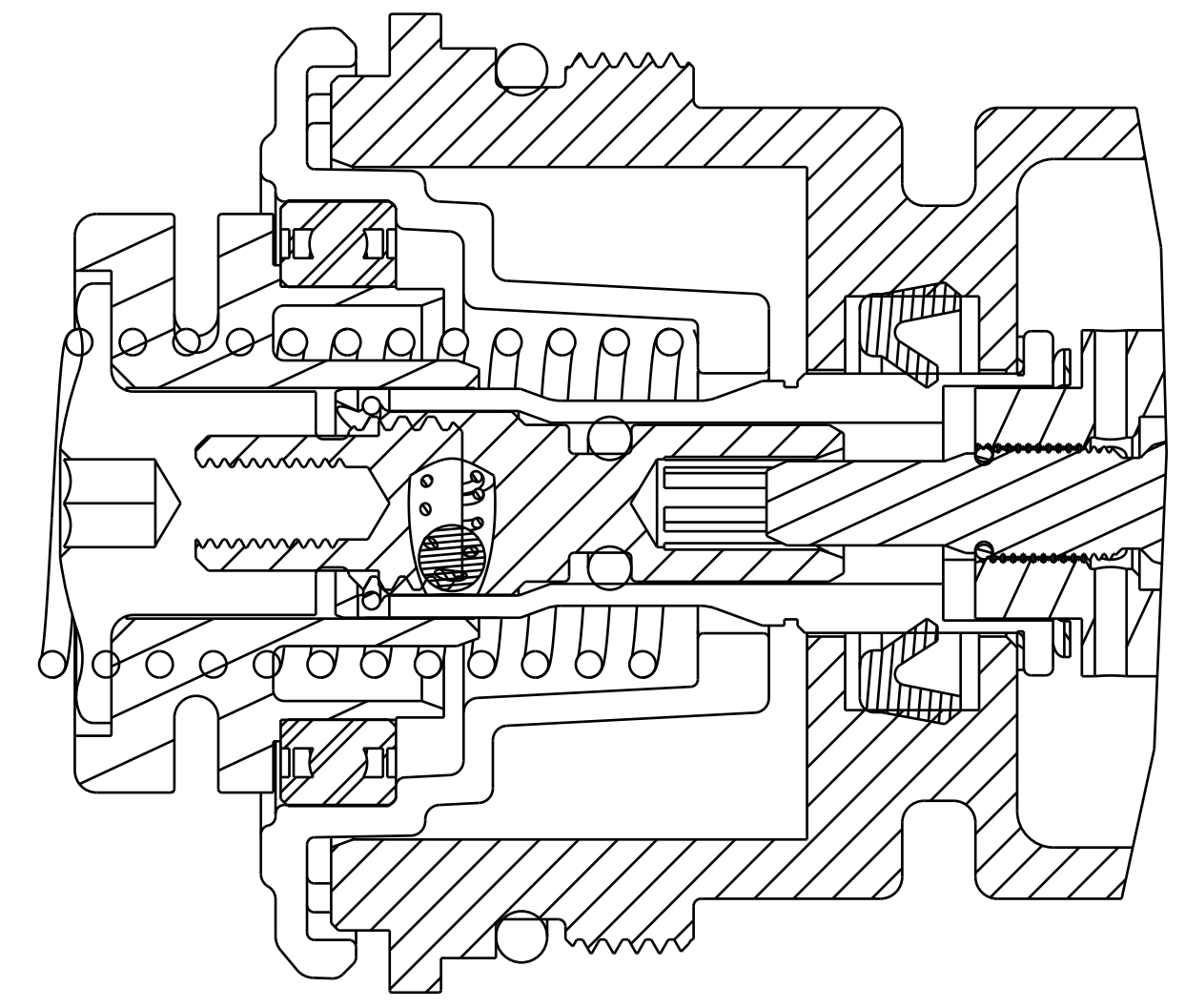
820-05-473-KIT
2018 FIT4 TopCap Interface Parts P-S Remote, U-Cup, Push-Unlock

TORQUE:
11±3 IN-LBS

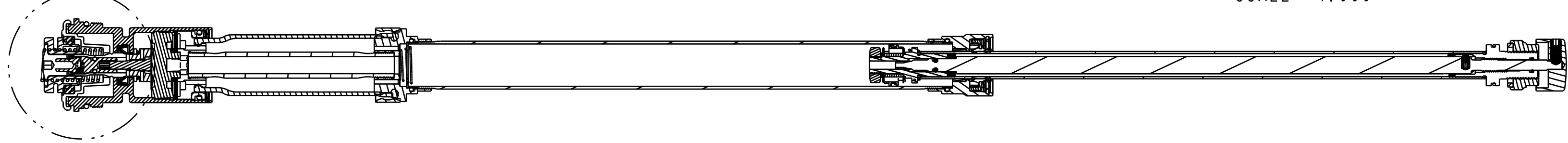
TORQUE:
220±5 IN. LB.

REFERENCE ONLY
(FOR INSTALLATION
INTO FORK)

SEE DETAIL A



DETAIL A
SCALE 4.000



PROPRIETARY
THIS DOCUMENT CONTAINS CONFIDENTIAL, PROPRIETARY INFORMATION
THAT IS FOR PROPERTY. DO NOT DISCLOSE TO OR DUPLICATE
FOR OTHERS EXCEPT AS AUTHORIZED BY FOX.

FOX Factory, Inc. Ph 831-768-1100
130 Hangar Way, Watsonville, CA 95076 USA Fax 831-768-9312

TITLE
**2018 32mm P-S FIT4 Remote
Cartridges Assemblies Complete**

SIZE DWG. NO.
D

PLOT SCALE 1.00:1 SHEET 1 OF 1