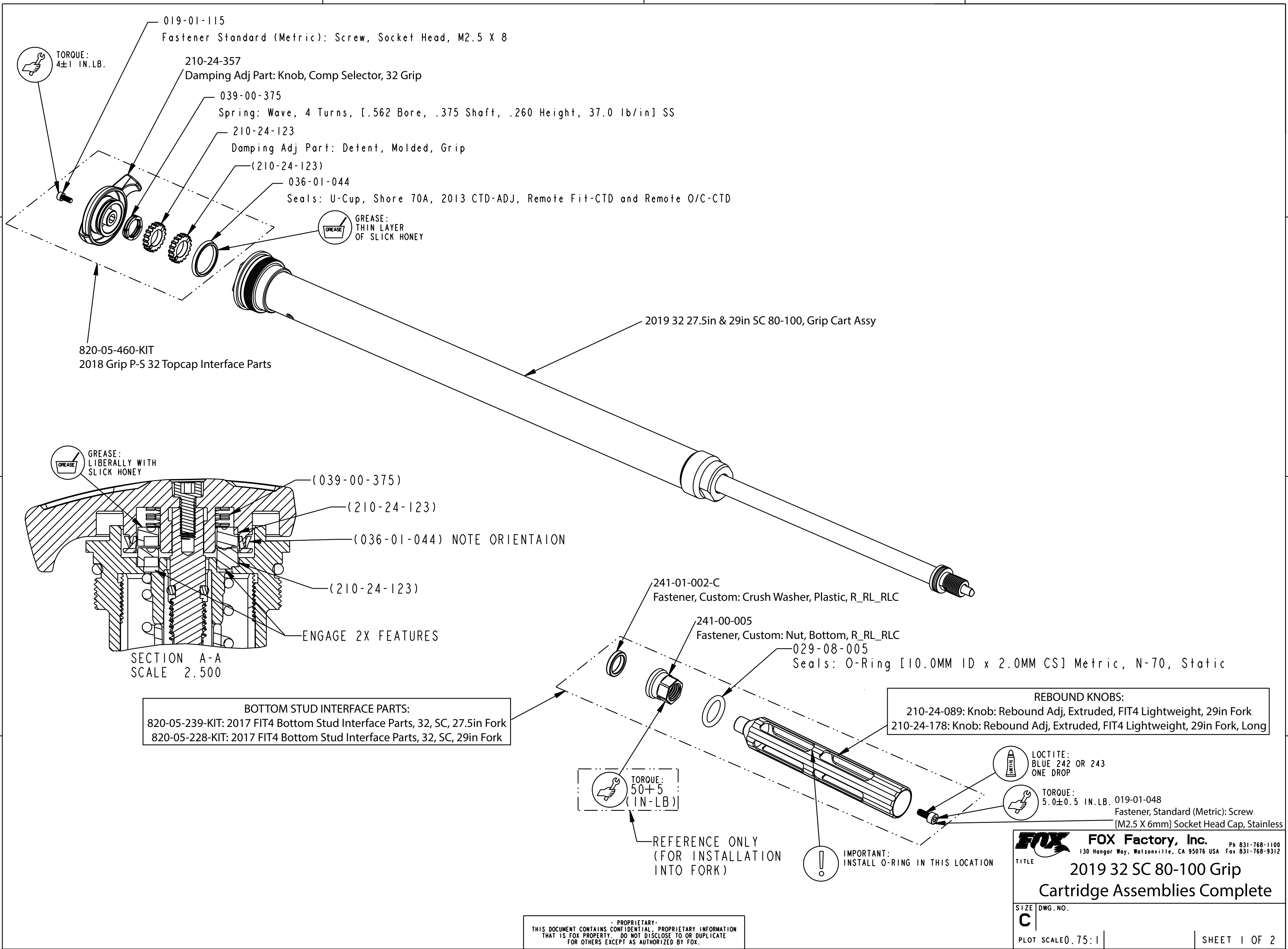


4

3

2

1



TORQUE:  
4±1 IN. LB.

019-01-115  
Fastener Standard (Metric): Screw, Socket Head, M2.5 X 8

210-24-357  
Damping Adj Part: Knob, Comp Selector, 32 Grip

039-00-375  
Spring: Wave, 4 Turns, [.562 Bore, .375 Shaft, .260 Height, 37.0 lb/in] SS

210-24-123  
Damping Adj Part: Detent, Molded, Grip

(210-24-123)

036-01-044  
Seals: U-Cup, Shore 70A, 2013 CTD-ADJ, Remote Fit-CTD and Remote O/C-CTD

GREASE:  
THIN LAYER  
OF SLICK HONEY

820-05-460-KIT  
2018 Grip P-S 32 Topcap Interface Parts

2019 32 27.5in & 29in SC 80-100, Grip Cart Assy

GREASE:  
LIBERALLY WITH  
SLICK HONEY

(039-00-375)

(210-24-123)

(036-01-044) NOTE ORIENTAION

(210-24-123)

ENGAGE 2X FEATURES

SECTION A-A  
SCALE 2.500

**BOTTOM STUD INTERFACE PARTS:**  
820-05-239-KIT: 2017 FIT4 Bottom Stud Interface Parts, 32, SC, 27.5in Fork  
820-05-228-KIT: 2017 FIT4 Bottom Stud Interface Parts, 32, SC, 29in Fork

241-01-002-C  
Fastener, Custom: Crush Washer, Plastic, R\_RL\_RLC

241-00-005  
Fastener, Custom: Nut, Bottom, R\_RL\_RLC

029-08-005  
Seals: O-Ring [10.0MM ID x 2.0MM CS] Metric, N-70, Static

**REBOUND KNOBS:**  
210-24-089: Knob: Rebound Adj, Extruded, FIT4 Lightweight, 29in Fork  
210-24-178: Knob: Rebound Adj, Extruded, FIT4 Lightweight, 29in Fork, Long

TORQUE:  
50±5  
(IN-LB)

LOCTITE:  
BLUE 242 OR 243  
ONE DROP

TORQUE:  
5.0±0.5 IN. LB. 019-01-048  
Fastener, Standard (Metric): Screw  
[M2.5 X 6mm] Socket Head Cap, Stainless

REFERENCE ONLY  
(FOR INSTALLATION  
INTO FORK)

IMPORTANT:  
INSTALL O-RING IN THIS LOCATION

PROPRIETARY  
THIS DOCUMENT CONTAINS CONFIDENTIAL, PROPRIETARY INFORMATION  
THAT IS FOX PROPERTY. DO NOT DISCLOSE TO OR DUPLICATE  
FOR OTHERS EXCEPT AS AUTHORIZED BY FOX.

**FOX Factory, Inc.** Ph 831-768-1100  
130 Hangar Way, Watsonville, CA 95076 USA Fax 831-768-9312

TITLE  
**2019 32 SC 80-100 Grip Cartridge Assemblies Complete**

SIZE DWG. NO.  
**C**

PLOT SCALE 0.75:1 SHEET 1 OF 2

4

3

2

Pr oE ASSEM