

4

3

2

1

019-01-115
Fastener Standard (Metric): Screw, Socket Head, M2.5 X 8

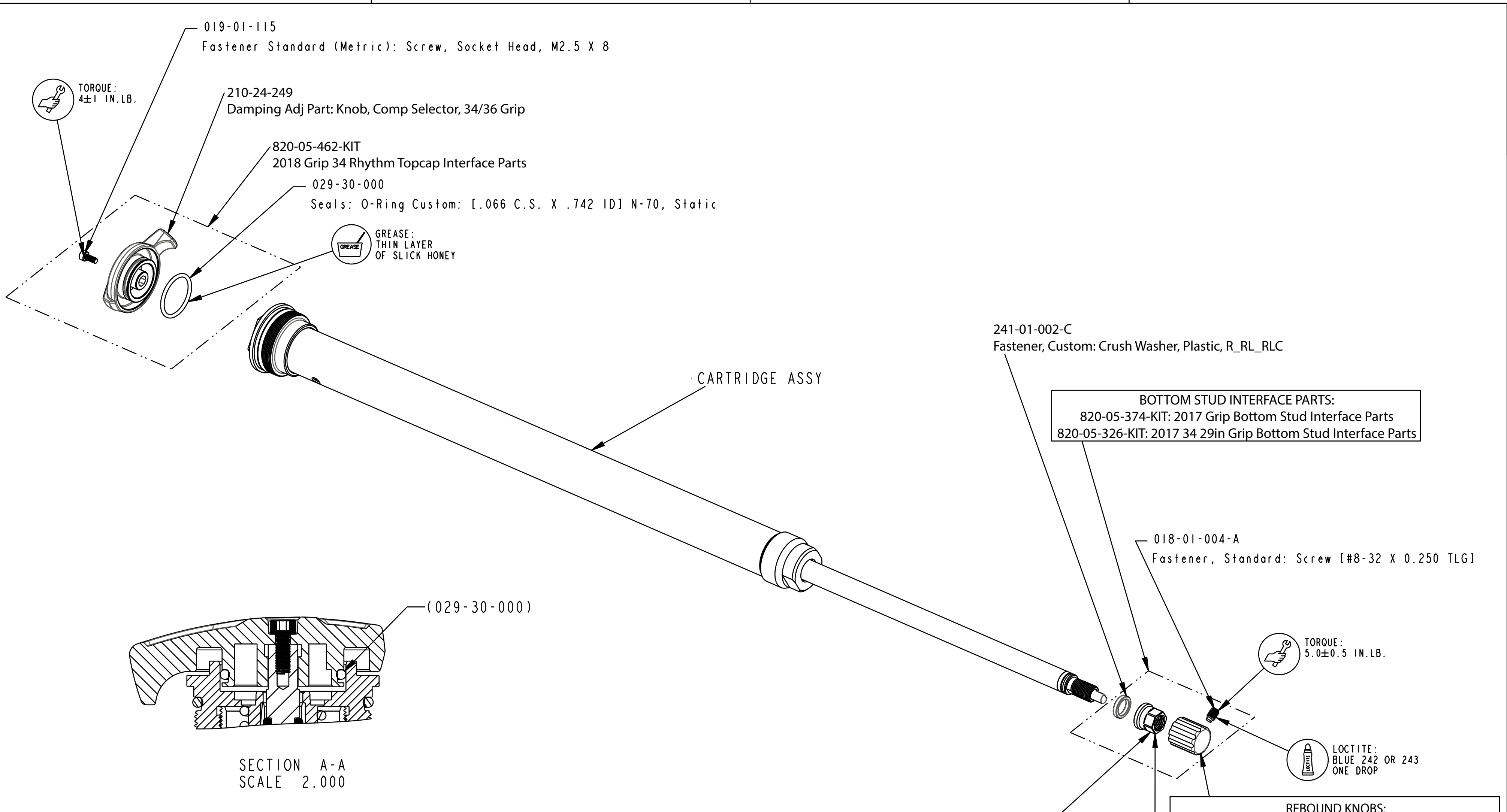
TORQUE:
4±1 IN.LB.

210-24-249
Damping Adj Part: Knob, Comp Selector, 34/36 Grip

820-05-462-KIT
2018 Grip 34 Rhythm Topcap Interface Parts

029-30-000
Seals: O-Ring Custom: [1.066 C.S. X .742 ID] N-70, Static

GREASE:
THIN LAYER
OF SLICK HONEY



CARTRIDGE ASSY

241-01-002-C
Fastener, Custom: Crush Washer, Plastic, R_RL_RLC

BOTTOM STUD INTERFACE PARTS:
820-05-374-KIT: 2017 Grip Bottom Stud Interface Parts
820-05-326-KIT: 2017 34 29in Grip Bottom Stud Interface Parts

018-01-004-A
Fastener, Standard: Screw [#8-32 X 0.250 TLG]

TORQUE:
5.0±0.5 IN.LB.

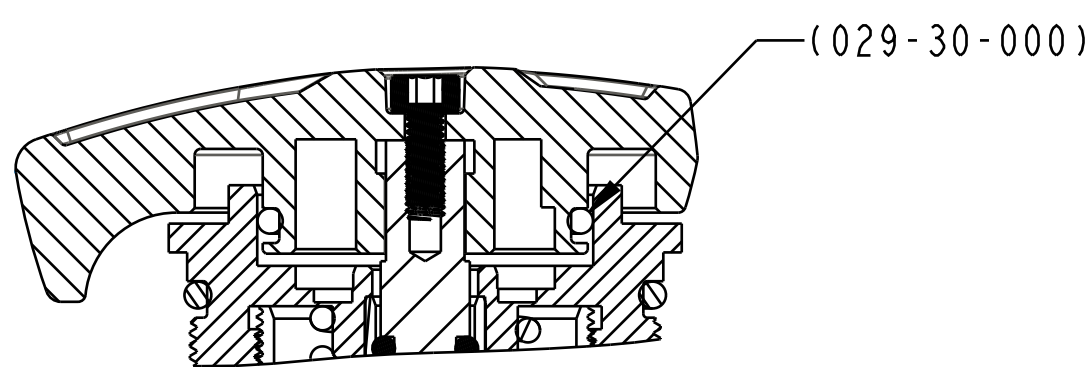
LOCTITE:
BLUE 242 OR 243
ONE DROP

REBOUND KNOBS:
210-22-726: Knob: Rebound Adjust, Extruded, Red, Grip
210-24-032: Knob, Rebound Adjust, Grip Extruded, Red, 29

241-00-005
Fastener, Custom: Nut, Bottom, R_RL_RLC

REFERENCE ONLY
(FOR INSTALLATION
INTO FORK)

TORQUE:
50±5
IN-LBS



SECTION A-A
SCALE 2.000

- PROPRIETARY -
THIS DOCUMENT CONTAINS CONFIDENTIAL, PROPRIETARY INFORMATION
THAT IS FOX PROPERTY. DO NOT DISCLOSE TO OR DUPLICATE
FOR OTHERS EXCEPT AS AUTHORIZED BY FOX.

FOX FOX Factory, Inc. Ph 831-768-1100
130 Hangar Way, Watsonville, CA 95076 USA Fax 831-768-9312

TITLE
**2019 34 Rhythm Grip
Cartridge Assemblies Complete**

SIZE DWG. NO.
C
PLOT SCALE 0.75:1 SHEET 1 OF 2

4

3

2

1

PROE ASSEM