

REFERENCE ONLY
(FOR INSTALLATION
INTO FORK)

TORQUE:
110±5
IN-LBS

210-03-120
Knob, Rebound, 2011 36_40

TORQUE:
5.0±1.0 IN. LB.

LOCTITE:
BLUE 242
ONE DROP

018-01-004-A
Fastener, Standard: Screw [#8-32 X 0.250 TLG]

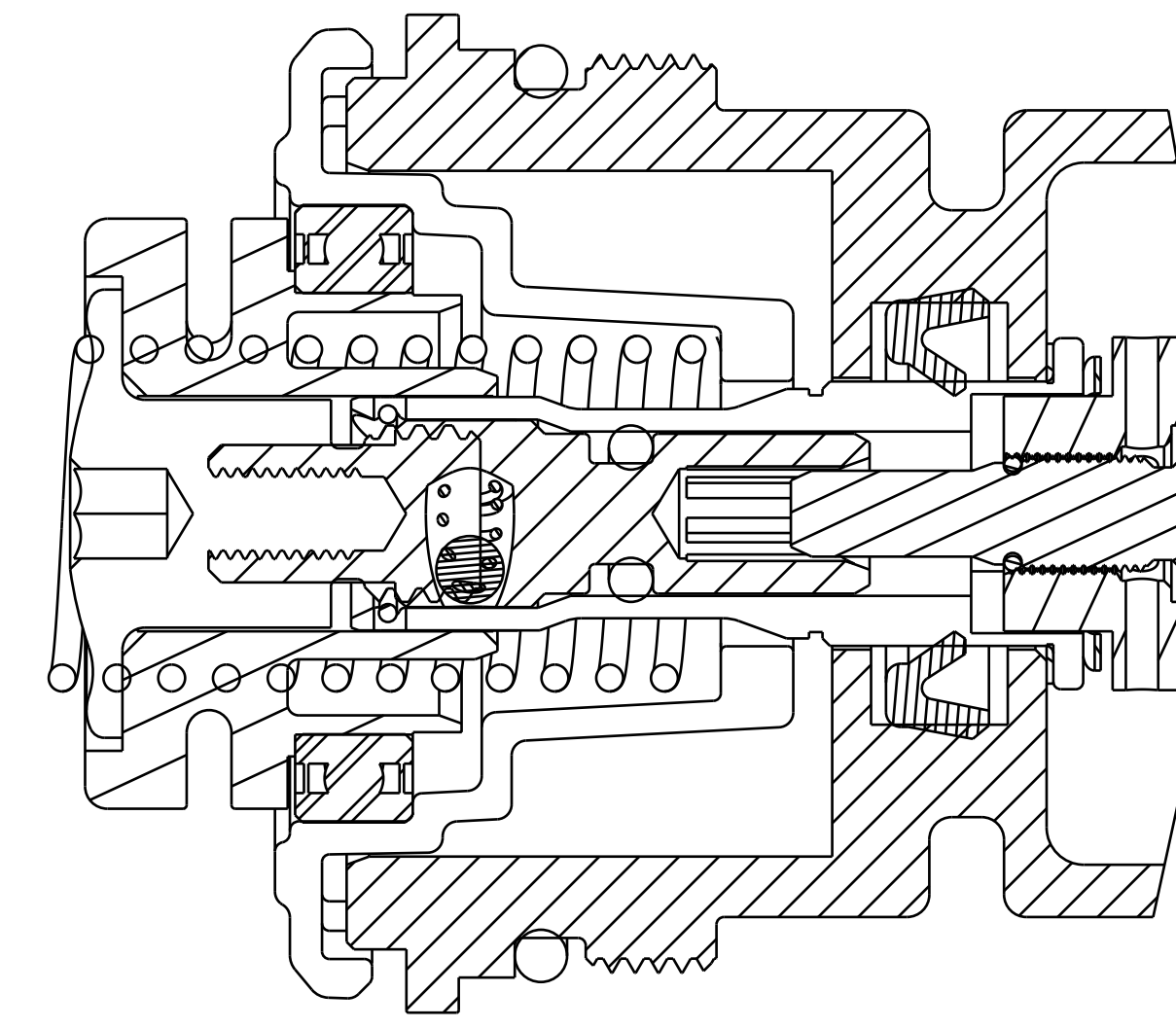
241-00-022
Fastener, Custom: Nut, Bottom, 011

241-01-011
Fastener, Custom: Crush Washer, Plastic, 13mm

820-05-377-KIT
2016 FIT4 Bottom Stud Interface Parts 36 and 40

2019 36 180 MAX E-Bike P-S FIT4 Remote Cart Assy, U-Cup, 2Pos, Push to Unlock

820-05-473-KIT
2018 FIT4 TopCap Interface Parts P-S Remote, U-Cup, Push-Unlock



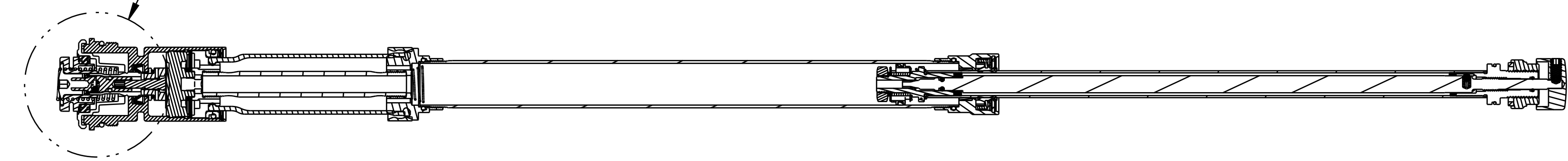
DETAIL A
SCALE 4.000

REFERENCE ONLY
(FOR INSTALLATION
INTO FORK)

TORQUE:
220±5 IN. LB.

TORQUE:
11±3 IN-LBS

SEE DETAIL A



FOX Factory, Inc. Ph 831-768-1100
130 Hangar Way, Watsonville, CA 95076 USA Fax 831-768-9312

TITLE 2019 36 180 MAX E-Bike P-S FIT4 Remote
Cart Assy Complete, U-Cup, 2Pos, Push to Unlock

SIZE DWG. NO. 820-18-153-KIT

D PLOT SCALE 1.00:1 SHEET 1 OF 1

PROPRIETARY
THIS DOCUMENT CONTAINS CONFIDENTIAL, PROPRIETARY INFORMATION
THAT IS FOR PROPERTY. DO NOT DISCLOSE TO OR DUPLICATE
FOR OTHERS EXCEPT AS AUTHORIZED BY FOX.