

REFERENCE ONLY  
(FOR INSTALLATION  
INTO FORK)

TORQUE:  
80±5  
IN-LBS

210-03-120  
Knob, Rebound, 2011 36\_40

LOCTITE:  
BLUE 242  
ONE DROP

018-01-004-A  
Fastener, Standard: Screw [#8-32 X 0.250 TLG]

TORQUE:  
5.0±1.0 IN. LB.

241-00-022  
Fastener, Custom: Nut, Bottom, 011

241-01-011  
Fastener, Custom: Crush Washer, Plastic, 13mm

820-05-377-KIT  
2016 FIT4 Bottom Stud Interface Parts 36 and 40

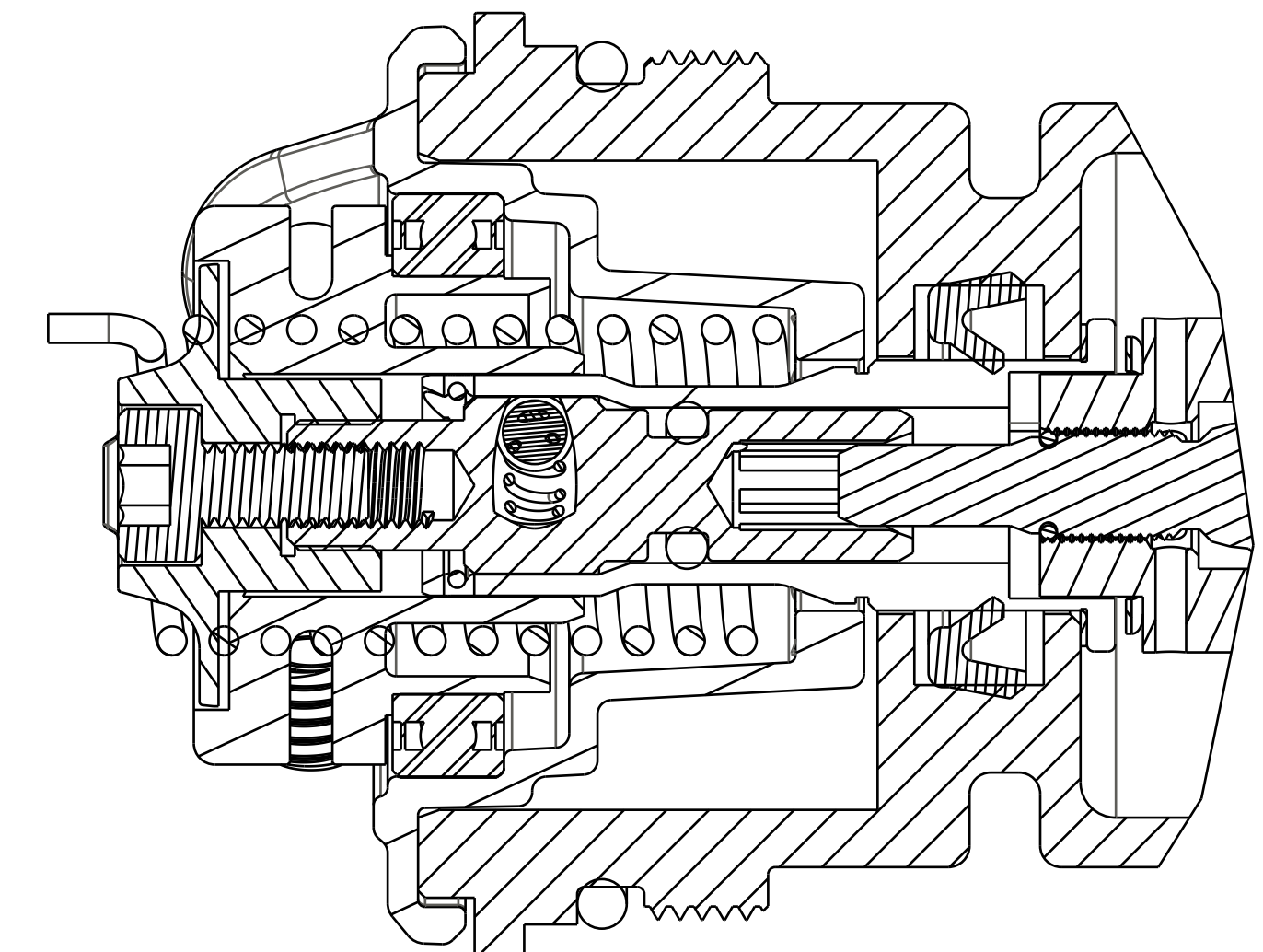
CARTRIDGE ASSY

Topcap Interface Parts:  
820-05-455-KIT 2018 FIT4 TopCap Interface Parts F-S Remote, U-Cup, Push-Lock  
820-05-456-KIT 2018 FIT4 TopCap Interface Parts F-S Remote, U-Cup, Push-Lock

TORQUE:  
11±3 IN-LBS

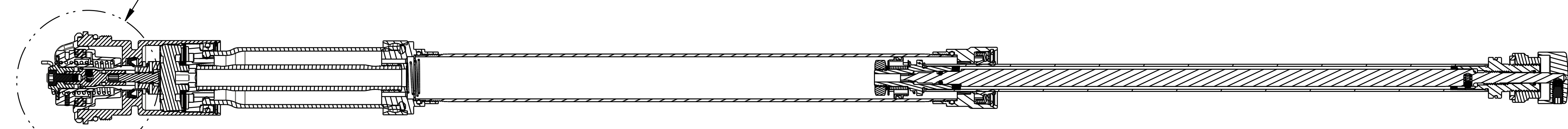
REFERENCE ONLY  
(FOR INSTALLATION  
INTO FORK)

TORQUE:  
220±5 IN. LB.



DETAIL A  
SCALE 4:1

SEE DETAIL A



SECTION A-A

**FOX** FOX Factory, Inc. Ph 831-768-1100  
130 Hangar Way, Watsonville, CA 95076 USA Fax 831-768-9312

2019 36 E-Bike+ F-S FIT4 Remote  
Cartridge Assemblies Complete

SIZE DWG. NO. D  
PLOT SCALE 1.00:1 SHEET 1 OF 1

PROPRIETARY  
THIS DOCUMENT CONTAINS CONFIDENTIAL, PROPRIETARY INFORMATION  
THAT IS FOR PROPERTY. DO NOT DISCLOSE TO OR DUPLICATE  
FOR OTHERS EXCEPT AS AUTHORIZED BY FOX.